

Ringwood & Fordingbridge NEWS



Kimbers 
THE FLOORING SPECIALIST

Carpets | Amtico
Karndean | Wood

Ringwood:
01425 464355
www.kimberscarpets.co.uk



Issue 900 • February 19th to March 19th • 2025

Established 1990

Roaring Success from Ringwood School students



What an incredible week it was in The Barn at Ringwood School – the production of Beauty and the Beast was a huge success, with standing ovations every night. Over 2300 people saw the enchanting story told by a cast of 80 students, a technical crew of 15 Production Arts students and a live orchestra.

Audiences were captivated through singing, acting and dance, re-telling the powerful story that has moved millions around the world.

continues on page 32

INSIDE

- Page 11 - Having Trouble Sleeping
- Page 14 - Winter Driving Tips
- Page 17 - Sport
- Page 20 - Whats On
- Page 24 - History
- Page 27 - Puzzle Page
- Page 31 - Things to do
- Page 34 - Small Ads
- Page 38 - Property Market Update

**INDEPENDENT
WORLDWIDE
TRAVEL & CRUISE
SPECIALISTS**

Fred. Olsen
Travel
Agents

Visit or call us...

25 Market Place
Ringwood BH24 1AN
☎ **01425 201669**

 **Donaldson
Ross & Co**

**Accounts
Consultancy
Start-ups
Taxation**

e: taxman@donaldsonross.co.uk
www.donaldsonross.co.uk

Call: **01425 480814**

01425 482509

**Service
Sales
Parts**

ENGLAND'S
GARDEN MACHINERY

For all your garden
needs.....

Call us or pop
in for a chat



The Old Coal Yard, 18 Hightown Rd, Ringwood, BH24 1NW

info@englandsGM.co.uk www.englandsgardenmachinery.uk



JOIN THE CHURCHILL GROUP

Based in Ringwood and proud to be one of the UK's 'Top 10' employers as ranked by The Sunday Times,

Start your next chapter with Churchill...

We currently have a variety of office based positions available at our beautiful, modern Head Offices in Ringwood. Offering both permanent and temporary positions, these roles require self-motivated, meticulous, and personable individuals who take pride in providing first-class service.

Our current opportunities include:

- ✓ Property Administration Supervisor
- ✓ Assistant Land Buyer
- ✓ Land Buyer
- ✓ Divisional Personal Assistant
- ✓ Careline Call Operator (Days & Evenings)
- ✓ Accounts Administrator
- ✓ Architectural Technologist

- ★ Stunning, modern offices with beautiful views
- ★ Career progression opportunities local & nationwide
- ★ Colleague wellbeing programmes
- ★ Extra day off on your birthday
- ★ £200 John Lewis vouchers for expectant parents
- ★ Ongoing investment into your personal development
- ★ Free Colleague health checks
- ★ Variety of other Colleague benefits

Our ambition, your future

We are proud to be a highly successful, award winning Company that transforms older people's lives. We specialise in building and managing high quality developments across the UK and were recently crowned overall 'Best Retirement Home Developer' at the WhatHouse? Awards.

Join us to fulfil your career goals and see where our opportunities can take you.



For more information on our current vacancies visit Churchill-living.co.uk/about-us/careers and search 'Ringwood'



Springing in to action

We've nearly made it! The mornings are getting lighter, the daffodils are starting to show themselves and we are exiting the final weeks of winter. For some local businesses, this winter has been one push too far.

We were deeply saddened to hear of the closing of Nava Coffee from Ringwood High Street. Yet another business that has been crippled by rising rents, increased business rates, the dominance of online shopping and the cost-of-living crisis squeezing both business owners and consumers.

The decline of independent shops isn't just an economic issue - it's a social one. These businesses don't just sell goods; they create jobs, foster local culture, and form part of the history of both Ringwood and Fordingbridge.

If we want to save our independent shops and protect the high streets, action is needed. Local councils must do more to support small businesses through initiatives that encourage footfall. But just as importantly, we as consumers must make conscious choices. Every purchase at a local store is an investment in the



community, helping to ensure that our high streets remain vibrant places where businesses can thrive.

Do you have a story you want to highlight? Whether about a local business, community group or school we'd love to hear from you.

Darren & Naomi

Ringwood & Fordingbridge NEWS

Publishers:

Darren & Naomi Loose

Advertising:

Rae Frederick
07970 831881
sales@rfnews.uk

Editorial

editor@rfnews.uk

Telephone:

01425 563111

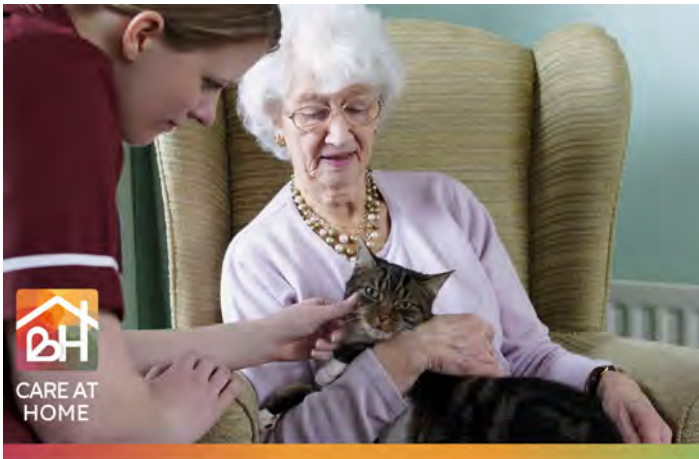
The next issue will be published on
Wednesday 19th March

Editorial copy deadline
Wednesday 12th March

Printed by Blackmore LTD, Shaftesbury, Dorset.

HAVE AN EVENT COMING UP

All non profit making community events can be advertised here FREE OF CHARGE. Please email your article to editor@rfnews.uk



Award-Winning Home Care & Live-in Care Services

We are turning a new page! Though our appearance may be evolving, rest assured that the long-standing quality care we provide remains unchanged.

Say Hello to our new logo



Call Now On: 01425470411

Our Wonderful shop is celebrating 50 years on Ringwood High Street

Made to Measure Curtains and Roman Blinds
Choose from fabric in stock or from 100's of swatch samples from Chatham Glyn, Prestigious & Clark & Clark fabrics.
We offer a FREE measuring service too

*** 20% off swish 'curtain' tracks in stock ***

We stock King Cole yarns, Simplicity patterns, Fiskars scissors, Dylon Dyes Pony & Hemline haberdashery and many more

TRY US FIRST & VISIT US SOON
OPEN 9AM - 4.30PM MONDAY - SATURDAY

RINGWOOD FABRICS
15 HIGH STREET, RINGWOOD, BH24 1AB
01425 475677 07980 747711

Follow us on Facebook & Instagram

NEWS

Fordingbridge Twinning Association - Murder Mystery evening coming soon!

Once again, Fordingbridge Twinning Association is running its annually very successful, great fun evening coming up on Saturday, 22 February!

Fordingbridge Twinning Association will be holding its annual Murder Mystery evening at Avonway Community Centre starting at 7.30 pm. As always, the evening promises to provide lots of laughs as the cast battle its way through all the clues to help the participating audience to solve the murder (which has taken place in this story called 'The Brie, The Bullet and the Black Cat') The attached photograph depicts some of the actors from last year's event doing just that!

A homemade 2 course hot supper is included in the ticket price of £18 per person – available from Caxton Décor and Jessica's, both in the Fordingbridge High Street. (The audience is requested to bring its own drinks – glasses will be provided!)

There will also be the famous 'silent raffle' to help raise funds for the forthcoming visit of Fordingbridge's French guests from Vimoutiers. The Twinning Association will be welcoming a delegation of approximately 40 French visitors who will be joining in Fordingbridge town's celebration of the 80th Anniversary of VE Day on 8 and 10 May.

Meanwhile, audiences are urged to go along to Fordingbridge town centre and get tickets now!

For further details, do contact Derek and Alison Ayling on 01425 650770, and or Hippotrain@BTInternet.com



RINGWOOD'S OLD TIMERS

The Building Trade is our Trade

There will always be an Old Timers coming through

Equiries please call **07310 933912**

BARROW BROS & TAPPER FUNERAL SERVICE



An independent family business founded in 1904, offering a caring, sympathetic service to the local community.

01425 472104

29a Southampton Road,
Ringwood, Hants BH24 1HB
tapperfuneralservice.co.uk



Only available through our branches.

- Cremations, burials and unattended funerals
- Prepaid funeral plans tailored to suit you
- All funerals arranged to your personal requirements
- Floristry and stonemasonry available
- Exclusive access to Harbour View crematorium

Peacock
COMPUTERS

Call 01425 333163
ringwood@peacockcomputers.net
Mon to Fri 9am - 5pm & Sat 9am - 3pm

Home Tech-Experts

Your one-stop shop for computer and smart device repairs, sales, support and data recovery!

- Computer health check
- Win / AppleMac repairs + upgrades
- Cyber security + data recovery
- Tuition + general assistance
- New computers + accessories
- Faster internet + better WiFi
- Anti-virus software
- Old tech recycling drop-off

Business IT Specialists

Simplify & scale your I.T. systems, minimise your long-term costs and collaborate with your teams

- IT systems architects
- Servers + database design
- Business email services
- Cloud data services
- Networks, VOIP + broadband
- Websites + digital marketing
- Software development
- Contract or payg service plans

Microsoft Partner

Apple Consultants Network

4 Fridays Court, Kingsbury's Lane
Ringwood BH24 1AB

Walk to Fridays court next to Pets Corner.
P available off Kingsbury's Lane

A & B POINTING & BRICK REPAIRS

POINTING, BRICKLAYING, FULL PROPERTY MAINTENANCE, LANDSCAPING.

PATIO'S LAID, POINTED, JET WASHED, PATHS & DRIVEWAYS, PAINTING & DECORATING.

● FULL PUBLIC LIABILITY INSURANCE

PLEASE CALL

TRY US

07802 797054 Cheekatrade

Forest Forge Theatre Company leaps forwards with the appointment of three new trustees

Forest Forge, the New Forest's leading theatre company, has started the year with the appointment of three new trustees to the board that oversee the charity.

Charity fundraiser and Ringwood Town Councillor James Swyer, community engagement specialist Jasmine Taylor and accountant and local businessman David Waugh bring extensive experience of the charity, cultural and commercial sectors.

James Swyer works as Head of Public Fundraising for Spurgeons, an innovative charity working with disadvantaged children and young people. He previously worked as the Director of Marketing and Memberships at the Game and Wildlife Conservation Trust in Fordingbridge. Since May 2023 James has represented the Ringwood South Ward as a Ringwood Town Councillor.



Jasmine Taylor is the Community Engagement Manager at Southampton Forward, a charity dedicated to transforming the city through culture and collaboration. In this role, Jasmine leads community engagement efforts and co-creates projects that were initially developed as part of the City of Culture bid. Before joining Southampton Forward, Jasmine served as the Cultural Development Manager at Hampshire Cultural Trust, based at the Forest Arts Centre in New Milton. She began her career in dance at Pavilion Dance South West and holds a Master's in Creative Event Management with a focus on co-creative practices.



David Waugh became involved with Forest Forge in 2024 when he joined Wordsmiths, the company's creative writing group. As a businessman and qualified accountant David has worked in businesses of all sizes. He has lived in Ringwood and the New Forest for 40 years. In 2000 he set up WaughGroup which supplies and designs clothing, from corporate staff uniforms to clothing for tv and film, including James Bond's Skyfall.



James, Jasmine and David join Forest Forge at an exciting time, as the company has secured a new premises, confirmed project funding from Arts Council England and launched a new look and website.

Forest Forge, a registered charity, has been an important part of the cultural life of the New Forest for over 40 years. The organisation was originally formed to create and tour professional theatre performances to rural venues. This strand of work it continues to deliver today, with the company having recently completed a highly praised tour of A Christmas Carol to

village halls across Hampshire, Wiltshire and Dorset. Alongside touring high quality professional theatre, the company has an extensive participation programme, working with over 100 people from

age 7 – 92, each week. The company also uses its expertise and playful artistic ethos to support, develop and inspire artists and theatre makers through its Artist Development programmes.

The trustee roles are voluntary, and the three new members join the existing board which already includes experts in theatre directing and producing, law, charity governance and marketing and communications.

Miranda Bentinck, Chair of Trustees says:

"We are thrilled that James, Jasmine and David are bringing their expertise, care and time to Forest Forge. As a board it is our role to oversee the charity and to secure its long-term future, as well as to champion the incredible work that is delivered by our team. I know that these new trustees will support Forest Forge on its exciting journey of development, helping it to continue to make an important difference to our community."

Find out more about Forest Forge its activities at www.forestforgetheatre.co.uk

FOREST FORGE THEATRE CO.

BRIGHTWATER

SALES | LETTINGS |
BUY-TO-LETS

01425 478 719

2 High Street | Ringwood |
Hampshire | BH24 1AF

hello@brightwaterproperties.co.uk

Meesons & Spurlings Solicitors

Need Direction?

Wherever you need to go, we offer a friendly professional legal service

We can provide advice over the telephone, via video conferencing and in person

Contact us today by telephone or email on: enquiries@meesons-spurlings.co.uk

Branches at:
Ringwood 01425 484420
Mudford 01425 275690
Christchurch 01202 473321

Conveyancing

Estate & Tax Planning

Dispute Resolution

Matrimonial

Wills, Probate & LPAs

www.meesons-spurlings.co.uk

New House, Market Place, Ringwood BH24 1ER

NEWS

The Joy of Repair- Inside your local Repair Café

It was a really cold wet morning and as I set out for the repair café I wondered if the weather would put people off from attending. I could not have been more wrong. There were already many volunteers in the hall buzzing around, setting up tables, equipment and generally preparing to open to the public. The atmosphere was already warm and jolly. There were so many volunteers there, I was sitting just watching and I counted 17, and a few more arrived later. All with fantastic skills to share, all multi-talented and very keen to help and not let anything go unseen by a repairer. A lady called Sandra came in with a petrol lawn mower she had inherited from her father-in-law. Bill took it outside in the cold and drizzle to see if he could mend the pull cord which had stopped working.

Frankie and Rasha came in from Lyndhurst. They had met in Covid-19 Lockdown during the time we were allowed out to take a walk and have been great friends since. They both had electric blankets that had failed, so brought them in hoping they could be sorted out.

The dedication and care of all the people at the café is so wonderful. None of them give up until a piece is repaired or reluctantly declared 'end of life'. And it all takes places with pleasure' humour and enthusiasm. And it doesn't stop there, the 'non-repairers' or Welcome Team are all on hand with a warm smile and welcome 'hello', aiming to help customers flow through the café with minimal hassle, facilitating assistance with form completion, matching repairs required to an appropriately skilled repairer, bringing in homemade cake for people to enjoy with a hot drink whilst they wait, accepting donations for repairs undertaken, and to just chat to people about anything and everything.

One gentleman told me he went home every month and looked for something that was broken just so he could come in and say

hello and talk to someone perhaps he could join the welcome team as a volunteer?

The repair café really is a wonderful place to spend a morning, lots of laughter and camaraderie, and of course the repairing of different articles going on. So many local people giving their time and skills for free for the benefit of the community. When I watch the television news at the moment with all the worrisome, alien, bad headlines, it is so encouraging to see in my tiny corner of the globe that good people exist, and I take heart that most of the world is still like this if you look for it. • At today's repair café, an estimated £4,274 replacement value of goods was seen

- 12 items were successfully repaired.
- 42kg of waste was prevented by repairing items instead.
- 15 items were declared repairable with additional spare parts acquired.
- Only 3 items were deemed 'end of life' - to be recycled or thrown away.





Kimbers

THE FLOORING SPECIALIST

All-inclusive Packages

We include:

- Underlay
- Carpet
- Fitting
- Accessories

Starting from
£19.99

CARPETS - WOOD - AMTICO - KARNDKAN - VINYL

See our ranges online or instore:

Christchurch: 01202 480900

New Milton: 01425 610101

Ringwood: 01425 464355

www.kimberscarpets.co.uk

warehouse@kimberscarpets.co.uk

shop@kimberscarpets.co.uk

ringwoodshop@kimberscarpets.co.uk



**FREE QUOTATIONS
MADE TO MEASURE
QUALITY CONTROLLED
OVER 35 YEARS
EXPERIENCE**

GS WINDOWS



Your local manufacturer and installer of high quality windows, doors, porches and conservatories in **Rehau** pvcu and **Smarts** aluminium

ORDER NOW for a FREE UPGRADE to A rated Triple Glazing from any A+ rated Double Glazed Package.

Price includes VAT, installations and a fully comprehensive 10 year insurance backed warranty	NEW A+ RATED TRIPLE GLAZED	A RATED TRIPLE GLAZED	A+ RATED DOUBLE GLAZED	A RATED DOUBLE GLAZED	NEW B RATED DOUBLE GLAZED
Any 3 Windows	£2,450	£2,340	£2,230	£2,175	£1,885
Any 4 Windows	£3,305	£3,115	£2,925	£2,900	£2,505
Any 5 Windows	£4,035	£3,905	£3,770	£3,625	£3,135
Any 6 Windows	£4,895	£4,685	£4,470	£4,345	£3,765
Any 7 Windows	£5,760	£5,465	£5,165	£5,072	£4,382
Any 8 Windows	£6,630	£6,205	£5,865	£5,800	£5,015
Any 9 Windows	£7,355	£7,020	£6,700	£6,525	£5,640
Any 10 Windows	£8,215	£7,805	£7,395	£7,250	£6,275
Any 11 Windows	£8,940	£8,590	£8,230	£7,970	£6,895
Any 12 Windows	£9,805	£9,365	£8,930	£8,700	£7,525
Any 13 Windows	£10,680	£10,155	£9,625	£9,425	£8,155
Any 14 Windows	£11,535	£10,930	£10,320	£10,155	£8,780
Any 15 Windows	£12,265	£11,705	£11,165	£10,875	£9,405



REHAU QUALITY PARTNER

New 36mm unit

TRIPLE GLAZED

- Increased security
- Saves money
- Saves energy

ALUMINIUM BI-FOLD DOORS

3 part
Any colour
Double glazed
upto 3.2 mtrs wide

£3,990
Fitting & VAT included

FRENCH & PATIO DOORS

Upto 1.9m wide x 2.1m high
£1,375
Fitting & VAT included

SASH WINDOWS

Any size A RATED
double glazed
white PVCu
vertical sliding
Sash windows
£995 each
Fitting & VAT included

Example: 4 windows = £3,980

FLUSH CASEMENT WINDOWS

NEW

3 windows A RATED
£2,495
extra windows
add 15% to the
above prices
Fitting & VAT included

Example 4 windows = £3,335

COMPOSITE DOOR OFFERS
£1,375 or 2 for £2,640

Any Composite Front Door & PVC
Back Door Includes any glass pattern
£2,125
Fitting & VAT included

0800 652 4576 or 07825 066727
FREEPHONE ANYTIME

Proud members of

Checkatrade.com 9.8/10
Where reputation matters

www.gswindows.co.uk

New CONSERVATORY
or replacement roof,
windows or doors

Example: 3x3m = **£12,995**
excluding building work

Local factories: Unit 3 & 6, Quay Lane Ind Est, Hardway, Gosport, PO12 4LJ

These offers cannot be used together with any other offer. Example shown is white pvcu, including VAT and installation. Special finishes and colours available. Toughened safety glass, obscure glass and trickle vents not included. Each section of a bay window counts as one window & bay charges apply. Terms and conditions please ask for details. Images only for illustration. We reserve the right to withdraw the offer without notice. • Offer for white windows to a maximum size of 2.5m x 1.3m. • Offer for Sash Windows to a maximum size of 1.4m x 1.8m



NEWS

Bickerley Green Resident Kath, Supports Salisbury Dogs' Trust for her 90th Birthday

Bickerley Green's resident Kath has had a lifelong passion for dogs. Even as a small girl she recalls taking stray dogs to her local police station – much to the amusement of the desk sergeant! Kath told us how the friendly sergeant would always comment to her: "What this, not another dog you've found? We will have to soon pay you for working on behalf of the police."

This love of dogs has continued for all Kath's life and for Kath's recent 90th birthday, Kath didn't want any gifts for herself, but to use this milestone birthday to raise funds and to gather donations for Salisbury Dog's Trust. When Kath came to live at Bickerley Green, Dogs Trust very kindly took in one of her beloved dogs, Georgia. With the help of Sarah, in reception, Kath put out an appeal for donations and gifts for the Salisbury Dogs Trust's charity. The response was terrific!

Kath has been overwhelmed by the generosity of both national and local businesses, residents and their relative's family and friends. Three huge boxes of doggy treats have been amassed and on 17th January, Justine from the Salisbury Dog's Trust came to collect these doggy delights from Kath and all her supporters at Bickerley Green.

Justine, wished to express her deep appreciation to Kath and to everyone who donated items to the Salisbury Dog's Trust. "Our Canine Care Card service is free and there to provide the comfort that if something should happen to you, your beloved four-legged

friend will be well cared for by Dogs Trust. Having been involved with the activation of Kath's Canine Care Card from the start, it was so wonderful to be able to visit and reassure her that her beloved Georgia is thriving.

On behalf of everyone at Dogs Trust Salisbury, thank you to Kath and everyone with a connection to Bickerley Green for the amazing donation of treats, toys, and goodies. We deeply appreciate the support, and all will be thoroughly enjoyed by our dogs."



Pictured, left to right, is Justine, from Salisbury Dogs' Trust and Bickerley Green resident Kath.

BEAUX

FOR YOUR HOME

92A CHRISTCHURCH RD. RINGWOOD
07786074465

INTERIOR DESIGN & LUXURY FURNISHINGS

Tables!

Friendly & Welcoming

Board Games
Table Games
Tea/Coffee
Light Lunch

Every Thursday
10.30am to 1.30pm

Entry £1.00 - Optional Lunch £2.00
Contact: Gillian 07734 679849



First Saturday Morning of the Month 10am to 12pm

- * Sausage Bap £2.50
- * Toasted Tea Cake & Butter £1.50
- * Slice of Cake £2.50
- * Coffee or Tea £1.00



The Salvation Army Hall - Christchurch Road - Ringwood BH24 1DL



SNS POINTING & BRICK CARE

- ALL ASPECTS OF POINTING
- MASONRY DAMP ISSUES ADDRESSED
- LEAD TRAY REPLACEMENT
- AIR BRICKS INSTALLED
- CAVITIES CLEARED
- WALL TIES REPLACED
- NEW DAMP COURSE INJECTED
- FULLY INSURED
- FREE ESTIMATES
- REFERENCES ON REQUEST

CALL SIMON ON 07812140604 / 01425473715

Tired of chasing payment? Try these tips:

For small business owners, late payments can be a nightmare. Cash flow is the lifeblood of any business, and waiting on overdue invoices can cause unnecessary stress.

So, how do you make sure your clients pay on time without damaging relationships?

Here are some practical tips to keep your finances running smoothly:

Clear Payment Terms

State payment deadlines upfront (7, 14, or 30 days).

Invoice Promptly

Send accurate invoices as soon as work is done.

Automate Reminders

A simple nudge before and after due dates works wonders.

Offer Multiple Payment Options

Make it easy with bank transfers, card payments, or direct debit.

Charge Late Fees

A small penalty can deter late payments.

Ask for Deposits

For larger projects, get partial payments upfront.

Good credit control means less stress and more cash in the bank.

Need help improving yours?
Call Donaldson Ross & Co today!

Ready to get noticed?

Read our blog on marketing your business to make the most of 2025!



**Donaldson
Ross & Co**
chartered certified accountants

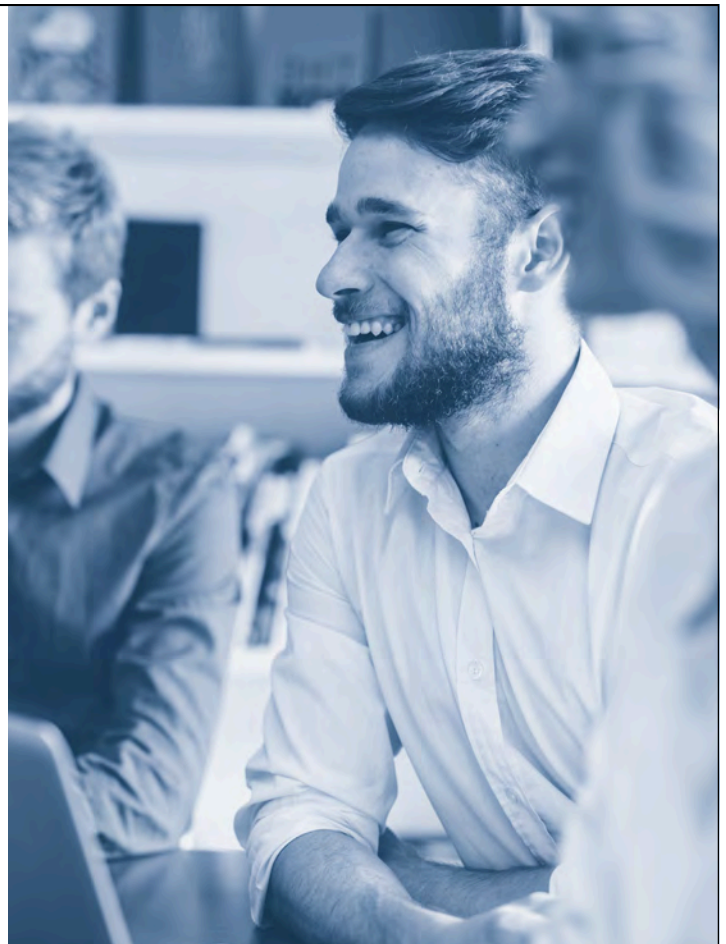
Donaldson Ross and Co. are an **innovative**, **approachable** and **forward-thinking** team of chartered accountants, tax advisers and business consultants.

- Accountancy and bookkeeping
- Business start-up and consultancy
- Tax returns and tax planning
- Payroll and VAT support
- Xero gold champion partner

Call: **01425 480814**

for a free consultation

12 Millstream, Ringwood,
Hampshire, BH24 3SE
e: taxman@donaldsonross.co.uk
www.donaldsonross.co.uk



NEWS

Understanding Investments-End of tax year investment planning

The end of the current tax year is April 5th 2025. As always it's good practice to review and potentially utilise allowances and exemptions in advance.

1-Individual Savings Accounts (ISAs):

There are no changes to the £20,000 allowance per adult (plus £9,000 for Junior ISAs). It is possible to earn interest of between 3% and 4.5% on accessible cash or fixed term cash bonds. Using your annual ISA allowance for either Cash ISAs or Stocks and Shares ISAs has become more important as any interest, dividends or capital gains are exempt from tax within an ISA.

2-Capital Gains Tax:

The annual personal exemption remains at £3,000 in April 2025. The Trust exemption is a maximum of 50% of this. Utilising annual exemptions can be important to reduce potential future tax charges. It may also be worth reviewing investment portfolios and crystallising losses in certain scenarios.

The rate of CGT was increased in the October 24 budget to 18% and 24% (from 10% and 20%), depending on whether it is charged at basic rate or higher rate tax.

3-Pension Contributions:

Making personal pension contributions can be very tax efficient. You obtain tax relief on the contribution at your marginal tax rate. In addition contributions can reduce your taxable income and can affect other allowances such as Child Benefit and your personal tax free allowance.

One of the criteria to receive Child Benefit without clawback as a result of the Child Benefit Tax Charge is that you or your partner's adjusted net income isn't above £60,000 per annum. If exceeded, a High Income Tax Charge is applied, meaning that Child Benefit is fully clawed back once income reaches £80,000.

The personal tax free allowance of £12,570 is tapered if adjusted net income exceeds £100,000. The effective tax rate for income between £100,000 and £125,140 is 60%!

Additional rate tax of 45% will be applied to earnings above £125,140.

Pension contributions reduce your adjusted net income so can be a powerful tool in reducing the tax you pay. The annual pension allowance for total pension funding is £60,000 although it is possible to go back 3 tax years and "carry-forward" unused allowances, subject to certain criteria. Personal tax-relievable contributions are limited to 100% of earnings or £3,600 or annum if more.

Finally, it is possible to make a pension contribution on behalf of another individual and the tax benefit will apply to that individual personally. So for example a retired parent who is a basic rate taxpayer could make a pension contribution for a working adult child who is a higher or additional rate taxpayer and the parent would make the payment net of basic rate tax relief and the adult child would receive any higher/additional tax relief, claiming this from HMRC.

4-Corporation Tax and Employer National Insurance Rates:

If you own a limited company corporation tax rates will remain at 19% for profits up to £50,000 and then 25% for profits in excess of £50,000. There are changes to both the employers rate of NI from 13.8% to 15% and the thresholds and allowances. You should seek advice from your accountant regarding the effect this may have on your business and any required planning. We work with accountants to ensure all planning is joined-up.

As you can see, it is important to keep up to date on tax changes and how they may impact your planning.

If you'd like to discuss your personal financial situation and planning, my colleagues Stewart Sims-Handcock, Harry Goodship and I are available for a free initial, no obligation chat.

Howard Goodship is an Independent Financial Adviser with Lonsdale Wealth Management, 5 Friday's Court, Ringwood Tel: 01425 208490 www.lonsdaleservices.co.uk

The value of an investment and the income from it could go down as well as up. The return at the end of the investment period is not guaranteed and you may get back less than you originally invested. The contents of this article are for information purposes only and do not constitute individual advice. The Financial Conduct Authority do not regulate cash flow planning, tax planning, or estate planning.

LONSDALE

Wealth Management

We help our customers:

- Plan for retirement
- Enter retirement
- Mitigate inheritance tax
- Fund residential care
- Invest tax efficiently
- We provide personal financial planning for business owners



Call us on 01425 208 490 for independent financial advice

5 Fridays Court High Street Ringwood Hampshire BH24 1AB

T 01425 208 490 **E** hgoodship@lonsdaleservices.co.uk **W** lonsdaleservices.co.uk

Lonsdale Services Limited is authorised and regulated by the Financial Conduct Authority.

The Financial Conduct Authority does not regulate Tax and Estate Planning.

HEALTH, BEAUTY & WELLBEING

Having Trouble Sleeping

If you have trouble sleeping massage is a great way to encourage the release of serotonin, a precursor to the hormone melatonin that helps us to fall asleep.

Massage can help you fall asleep easier and sleep deeper, allowing your natural circadian rhythms to return to normal.

Aim for at least 8 hours a night - you will feel refreshed and revitalised the next morning.

If you can't go for a massage regularly or late in the day, research self-massage tips that you or a partner can perform at home.

If this still isn't an option here are some more **Top Tips:**

* By going and doing some exercise - a swim or a run, that's a really good way of protecting your sleep.

* People get into the habit of having herbal teas, and when they're trying to be healthy they have a set amount of water they try and drink in the day and it gets to 7pm or 8pm and you have to down several pints of fluid, which keeps you up. We don't need to drink anything in the last two hours before bed. Have your last drink two



hours before bed and just have little sips after that.

* It's best to eat your main meal a couple of hours before bed. Sometimes people eat quite early but then they snack quite late. The problem with a bowl of crunchy nut cornflakes before bed is that it can really spike your blood sugar. And then if you do this, that has an impact on falling asleep and your quality of sleep.

If you do need to snack, choose something that's high in protein and low in carbohydrates and processed sugars. Something

like Greek yoghurt or almonds, which have amino acids that are required for making the hormone melatonin. Avoid Diet Coke and dark chocolate, which both contain high caffeine content.

* If you don't sleep you might be tempted to turn your alarm off, but actually setting your alarm means that you still have a regular wake-up-time, which is important. Sleeping in doesn't protect your sleep in the long run. If you sleep badly one night, take a hit, write it off and wake up at a good time.



For all your laser skin needs:

- IPL hair removal
- Tattoo removal incl SPMU brows
- Rosacea treatment
- Birthmark removal
- Carbon laser peel

Cryotherapy- removal of skin lesions:

- Skin tags
- Warts and verrucas
- Pigmentation removal
- Cherry angioma

Located close to Ringwood Town Centre, with parking available.

Call Nicky 07838178515

Email: info@laserskintherapybynicky.co.uk

www.laserskintherapybynicky.co.uk

Get an expert opinion

We now offer mole checks



Assessed by UK consultant dermatologists

DO YOU HAVE A MOLE/ LESION THAT YOU'RE CONCERNED ABOUT?

- We now offer remote assessments by UK Consultants and Dermatologists
- Avoid long waiting times with your GP which can take weeks
- Private Dermatologists costs can range from £150 +
- We'll capture your mole/lesion in our clinic using a specialist lense and get a comprehensive history of it
- You'll receive a detailed report back from the Dermatologist which you can then forward on to your own GP for faster referral or the mole/ lesion can be removed by ourselves if safe to do so.
- This new advanced fast track service will cost just £70 for this initial service (additional costs will be charged for any further treatments by ourselves)

HEALTH, BEAUTY & WELLBEING



At Simply Beauty Ringwood, we provide luxurious treatments in a fresh, welcoming environment to help you escape the daily stresses and demands. Enjoy pampering OPI and Shellac manicures and pedicures, relaxing massages, Clarins blissful facials, LVL lash-enhancing treatments and much more.



☎ 01425 472662

🌐 www.simplybeautyringwood.co.uk

PODIATRY

in Fordingbridge

Qualified and registered health care professional (HCPC) offering:

- Routine foot care
- Nail Care
- Removal of hard skin, corns & callus
- Diabetic foot checks & care
- Medical pedicure with foot massage
- Clinic appointments or home visits
- Other podiatry treatments are available - please call for details



01425 524014 / 07496 168303

podiatryinfordingbridge@yahoo.com

71b High Street, Fordingbridge SP6 1AS

Southfield

DENTAL PRACTICE



Fed up with old and uncomfortable dentures?

Book your FREE assessment with our expert Denture Technician Steve Martin

Steve crafts lifelike dentures with exceptional quality, specialising in both full and partial replacements for missing teeth



Before



Steve Martin



After

Southfield Dental Practice, 115 Christchurch Road, Ringwood, Hampshire, BH24 3AQ

Call us: 01425 489283 | enquiries@southfield-dental.co.uk | southfield-dental.co.uk

HEALTH, BEAUTY & WELLBEING



Experience Holistic Care

At Body Consultancy, we deeply understand the challenges of dealing with muscular, skeletal, and joint issues. Our team of experts in chiropractic, physiotherapy, osteopathy, podiatry, GP services, and nutrition offers a wide range of services to support your journey to better health.

What sets us apart is our commitment to your well-being. We provide a free initial fact-finding consultation to tailor a personalised care plan that targets both symptoms and root causes. By combining the knowledge of six health professions, we empower you to take control of your health and live a fuller life.

With compassion and expertise, we aim to help you regain your freedom and embrace a vibrant, healthier future.

Trust us to walk alongside you on this path to wellness.

www.bodyconsultancy.com



Chiropractic

Osteopathy

Physiotherapy

Podiatry

Private GP

Nutrition

**Ready to achieve your goals?
Book your consultation today.**



Ringwood
01425 839908
39 Southampton Rd,
Ringwood, BH24 1HE

Verwood
01202 021138
21 Station Road,
Verwood, BH31 7PY

Christchurch
01202 048222
14 Saxon Square,
Christchurch, BH23 1QA

NEWS

Tips for staying safe on winter roads

Driving in the winter can be more challenging, so its important to take extra care.

Before you set off

- * Ensure your windscreen, windows and mirrors are clean.
- * Check your wipers and top up on windscreen washer liquid.
- * Check your headlights, indicators and brake lights are working.
- * Check your tyres are legal, the legal limit is currently 1.6mm
- * Plan your journey giving thought to any potential issues like flood-prone areas. Also monitor the weather.

While you're on the road

- * Stay in as high gear as possible on slippery roads - alongside keeping your revs low, this reduces the chance of spinning your

whells and losing control.

- * Pay attention to your speed and distance between cars, in wet wintery weather you should increase this ten-fold.
- * Slow down when approaching a bend and try not to brake hard.
- * Do not use cruise control as your car will not be able to register the conditions.
- * Be aware of specific conditions as frost will take longer to thaw, areas such as roads under bridges.

It is recommended that you carry the following in your car:

- | | |
|---------------------------|-----------------------------|
| * ice scraper | * torch and spare batteries |
| * first aid kit | * empty fuel can |
| * road atlas | * phone charger |
| * high-visibility jacket | * boots with good grip |
| * jump-start cables | * food and drink |
| * reflective warning sign | * sunglasses |
| * warm clothes | * blanket |



Leading experts in the supply & installation of high quality fireplaces

We have a wide range of designs & experts on hand to advise you.

Visit our showroom today!

GAS - ELECTRIC - WOODBURNERS - BIOFUEL



01425 333760



+44 7457405634

10 Christchurch Rd,
Ringwood,
BH24 1DN

info@no1fires.co.uk

www.no1fires.co.uk

Prostate Cancer Screening Day at Unity Hall 12th April 2025

The Lodge of Unity 132 and Freemasons in Ringwood and the surrounding area are supporting the Prostate Cancer Support Organisation (PCaSO) in their charitable work of screening Men over the age of 50 to combat Prostate Cancer. This pernicious and insidious cancer is diagnosed in over 45,000 men a year in the UK (NHS England).

Left undiagnosed and untreated it ruins the lives of men and their families.

We want to play a small part in combatting this cancer by encouraging Men in our local community to book on-line for a Prostate cancer screening Test. It is a simple blood sample taken from your arm, to measure the amount of prostate specific antigen (PSA) to be found in your bloodstream. The booking details are on the adjacent information sheet.

A small donation (£15-20) is always welcome to defray costs, all donations go to PCaSO.

Local Freemasons will be supporting PCaSO on the day; tea, coffee and biscuits will be freely available, and we would be pleased to explain to visitors the Charitable work we do for our Local communities to support many other Clubs, Associations, Groups and Charities.

The Lodge of Unity 132 began in 1764 and has been in Ringwood since 1774, it remains the oldest not for profit charitable Organisation in the town. Help us help you help others.



Prostate Cancer Support Organisation
In association with
Ringwood Masonic Lodge
are hosting a



PSA* Blood Test Event

For men aged between 50 – 80
Saturday 12th April 2025 1000 – 1500 hrs.
Unity Hall 2 Southampton Road
Ringwood BH24 1HY

It is recommended that any man over 50 or over 40 if there is history of Prostate Cancer be checked regularly.

Know your PSA, Know y where its going!
By appointment only. Book online using the
QR Code or at www.pcaso.org/psa-testing
Opens from 1st Feb 2025



We do not charge for the service Donations are welcome to defra costs

Prostate Specific Antigen. An indicator of Prostate health. A small blood sample, taken from a vein Results take around 5 – 10 days.

www.pcaso.org Reg Charity No. 1170536

We do not charge for this service, but donations are welcome

To find out more about Freemasonry

Email: Ringwoodmasons@gmail.com

Or Call

Chris on 07977 414597

SPORT

Fishing on The Hampshire Avon

The Hampshire Avon, one of the most historic fishing rivers in the British Isles, which travels down from Wiltshire at its source and meanders through Hampshire and through to Dorset where it meets the sea at Christchurch, which was once located in the County of Southampton.

This water is held in high esteem amongst the angling community and has earned its iconic status by its immense record of catches of many different species of the river. From Salmon, as photographed, through to Barbel, Pike, Sea Trout.

The river boasts many thousands of visitors who take the pilgrimage to the water in pursuit of their chosen quarry. Many books and historical anecdotes have been written about the Avon. One of the many facts on the various stretches of this river relates to the Royalty Fishery, in Christchurch. This stretch of river once belonged to the Countess of Salisbury and was taken by the Crown following an act of treason by her two sons who fled to France. She was sent to the Tower of London, at the age of 80, and was subsequently beheaded, and this stretch of water was gifted to the 1st Earl of Wessex by the ruling monarch, Henry VIII, who would enjoy a "surfeit of Sea Lamprey" from the fishery.

I am always looking for any information, photos, notes, books, etc, that relate to this River to keep adding to our knowledge on its history.

Please can you contact Jason Lewis on 07920 800333 if you are able to help. Thanks.



**RINGWOOD & SOPLEY
SELF STORAGE**

Domestic, home &
Retail use.

New 20ft x 8ft & 10ft x
8ft containers on hard
standing. Suitable for
horse boxes & boats.
A very clean site.

Telephone: 07717 310422

RED
EXPRESS TAXIS

DRIVERS WANTED

Looking for a
full or part-time job?

Based in Ringwood, we are recruiting
drivers for a range of shifts including
school runs, day and evening shifts
during the week or weekend.

Find out more by calling
01425 474747

www.redexpresstaxis.co.uk

Local knowledge is desirable, Minimum age of 25.

carehome.co.uk
Rated 9.7/10 on carehome.co.uk

9.7

OAK MOUNT
CARE HOME

RINGWOOD
01425 479492



A family-run care home with a friendly atmosphere.

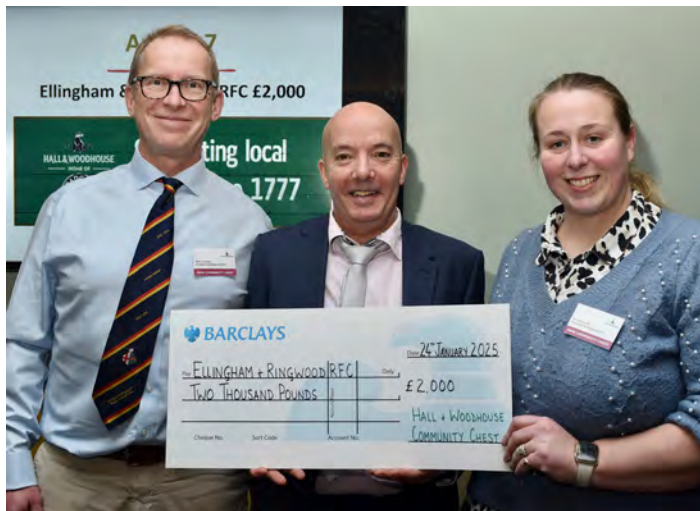
SPORT

Ellingham and Ringwood Rugby Club Receive Funding

On Friday 24th January Ellingham & Ringwood RFC were invited to attend the Hall & Woodhouse Community chest Awards night at their iconic brewery in Blandford Forum. Becci Windsor (Bar & Catering manager) and Mark Johnson (Director of Rugby) were joined by Rae Frederick (Ringwood's Town Mayor).



The evening began with a presentation by Mark Woodhouse CEO of Hall & Woodhouse of the company's incredible history. Founded in 1777 by Mark's forefathers the company has been handed down from generation to generation of Woodhouse. The firm has a long-established culture of giving and supporting the communities it serves, and this was evident throughout the evening. Ellingham & Ringwood were given a grant of £2,000 to help the club develop its bar & catering capabilities. This will help the club to deliver to the people of Ringwood who are its loyal fanbase by enabling them to be served more quickly during matches and at the many fundraising events the club supports. Mark Johnson said "It was marvellous to see so many diverse causes being celebrated and funded by Hall & Woodhouse. We learnt so much, and I look forward to developing our partnership over the years to come."



New Battery Installed at Ellingham and Ringwood Rugby Club from Ringwood Actions for Climate Emergency (RACE) Funding

Ellingham and Ringwood Rugby Club is thrilled to announce the installation of an extra, state-of-the-art battery to power the club's facilities. This forms part of the club's forward-thinking project to be more sustainable and was funded by RACE. The installation of the battery supplements the existing installation of photovoltaic panels sponsored by Smart Hole Technical and it will enable the club to store energy generated from these panels, reducing reliance on the national grid during peak times. By using clean, renewable energy, the battery system is not only helping to lower operational costs but also contributing to Ellingham and Ringwood's commitment to environmental responsibility. "We are incredibly excited to be progressing this project," said Club

Treasurer, Matt Windsor. "The photovoltaic panels and battery installation align with our vision of a greener future while enabling us to continue providing a fantastic environment for our players, volunteers, and supporters."

Bryony Robinson, RACE Treasurer added "We are delighted to be able to support projects like this, helping organisations in Ringwood to take steps towards a lower carbon future. This is only possible due to the dedication of our volunteers and the kind donations we receive from members of the public"

About Ellingham and Ringwood Rugby Club: Ellingham and Ringwood Rugby Club has been a cornerstone of the local community since 1966, offering a welcoming environment for players of all ages and abilities. The club is dedicated to promoting rugby while fostering inclusivity, teamwork, and respect for the environment.

About RACE: A registered charity based in Ringwood, Hampshire, with the aim of bringing people together to take actions that help the environment, biodiversity, and climate change.



Ringwood Town Football Club
Ringwood Community Hub

Upcoming Fixtures
2024-25

Date	H/A	Opponents
Tue 18 Feb	H	AFC Stoneham* So'ton Senior Cup quarter final
Sat 22 Feb	A	Cove
Sat 1 Mar	H	AFC Fawley
Sat 8 Mar	H	East Cowes Vics
Tue 11 Mar	A	Ash Utd*

*KO 19:45, otherwise 15:00

20% off entry to home matches!
just quote code RFNEWS

NEWS

Ubuntu ~ Celebrate their 40th Anniversary

Ubuntu ~ Celebrate their 40th Anniversary with an Unforgettable Evening!

As part of their 40th anniversary celebrations, we are beyond excited to welcome **Ubuntu**—a vibrant and inspiring performing group made up of alumni from the **African Children's Choir**—to **Poulner Baptist Chapel on Friday, 21st March!**

These talented young performers have just completed secondary school, thanks to the support of **Music for Life**, and are now sharing their incredible gifts on a **gap-year tour** before heading to university. And who knows? **Some of them may have even performed as part of the African Children's Choir in years past!**

Join us for an evening of **joyful music, uplifting energy, and unforgettable performances** as we celebrate this milestone together. You won't want to miss it!

Date: Friday, 21st March

Time: 7:00 PM

Location: Poulner Baptist Chapel, Adults £5 with children going free.

If you'd like to support the incredible work of **Music for Life**, there will be an opportunity to make a donation on the night.

Sign up below, save the date and invite your friends — we can't wait to see you here!



SCAN ME

THE DREAM TOUR

Date: Friday 21st March
Time: 7pm @ Poulner Baptist Chapel

CELEBRATING 40 YEARS FEATURING THE UBUNTU CHOIR - African Children's Choir Alumni

HINTON CARS
TAXIS PRIVATE HIRE
DRIVERS WANTED
FULL or PART TIME AVAILABLE
01425 276 888

FAMILY COMPANY
FRIENDLY SERVICE

- AIRPORT & CRUISE TRANSFERS
- WHEELCHAIR ACCESSIBLE
- LOCAL JOURNEYS

[HTTPS://HINTONCARS.CO.UK/TAXIS-RINGWOOD](https://hintoncars.co.uk/taxis-ringwood)

LOOSE LEGAL
Family Law Specialists

Solicitors
Child Inclusive Accredited
Mediators
Collaborative Lawyers
Parenting Co-Ordinators

www.LooseLegal.co.uk

EDEN
Funeral Directors

The Personal Approach

Family Business of the Year 2023 Winner
Eden Funeral Directors

Ringswood BUSINESS AWARDS '23
Business of the Year 2023 Runner Up
Eden Funeral Directors

01425 837080
24 Hours
Rose Cottage, Castleman Way,
Ringwood, BH24 3BA

www.edenfuneraldirectors.co.uk

Holiday outside the box

Book your perfect getaway with the UK's largest independent travel agent

Nobody offers you more
✓ Service ✓ Value ✓ Choice

Ringwood 01425 479022 | Fordingbridge 01425 654410



A Guide to Applying for a Child Arrangements Order

In cases where parents are unable to agree on arrangements for their children following separation or divorce, seeking a Child Arrangements Order (CAO) from the court in the United Kingdom can be needed. A CAO establishes where a child will live, who they will spend time with, and other aspects of their care and upbringing. Here we will provide a step-by-step guide to help parents understand and navigate the process of applying for a Child Arrangements Order.

Step 1: Consider Mediation

Before applying for a CAO, parents now have to attend a Mediation, Information and Assessment Meeting, unless an exemption is being applied for. This could be due to urgency. Mediation offers a less adversarial approach to resolving disputes and can help parents reach agreements on child arrangements with the help of a neutral mediator. In many cases, reaching an agreement through mediation can avoid the need for court intervention.

Step 2: Gather Relevant Information

Before making an application for a CAO, it's important to gather all relevant information, including details about the child's basic details, current living arrangements, any specific needs or preferences they may have. Additionally, parents should be prepared to provide information about their own circumstances, including work schedules, living arrangements, and any concerns they may have regarding the other parent's ability to care for the child.

Step 3: Complete the C100 Form

The next step is to complete the C100 form, which is the official application form for a Child Arrangements Order. This form requires detailed information about both parents, the child, and the proposed arrangements for the child's care. It's essential to be thorough and accurate when completing the form to ensure that all relevant information is provided to the court.

Step 4: Submit the Application to the Court

Once the C100 form is completed, it should be submitted to the

family court along with the appropriate court fee. The court will then process the application and allocate a case number. Background safeguarding checks will be completed, the process for which will depend upon what court you are issuing your application in. For some cases, the court may also schedule a preliminary hearing to discuss the application and explore the possibility of reaching an agreement without the need for a full hearing.

Step 5: Attend Court Hearings

If an agreement cannot be reached through mediation or negotiation, the court will schedule a series of hearings to consider the application for a CAO. Both parents will be required to attend these hearings and present their case to the judge. The court will consider the best interests of the child when making a decision and may seek input from other professionals, such as social workers or child psychologists.

Step 6: Obtain the Child Arrangements Order

If the court is satisfied that a CAO is necessary and in the child's best interests, it will issue the order outlining the arrangements for the child's care and upbringing. This may include details about where the child will live, when they will spend time with each parent, and any other specific arrangements deemed necessary by the court. The court works on the basis of the 'no order' principle, meaning they will only make an order if the welfare of the child requires it.

Conclusion:

Applying for a Child Arrangements Order can be a complex and emotionally challenging process, but with the right guidance and support, parents can navigate the process successfully. By seeking legal advice when needed, parents can ensure that the best interests of their child are prioritized and that suitable arrangements are put in place for their care and upbringing.

If you or anyone you know requires help and assistance with child arrangements, get in with Loose Legal touch for a free initial discussion: office@looselegal.co.uk 01425 536046

We Love Pets Ringwood

We Love Pets has been providing reliable, award-winning care for the nation's pets for over 15 years; including dog walking, home boarding, pop in visits and much more. Whether your pet is big or small, furry, feathered or scaly - We Love Pets are happy to help! They are the largest pet care provider in the U.K. and have also received ethical accreditation due to their high standards of animal welfare.

The local branch is run by Catherine and her team of animal loving professionals, who are committed to providing the very best care to the pets in their community. The team are all DBS checked, fully insured and trained in pet first aid.

One of the most popular pet care services they offer is dog walking. Having a reliable dog walker can remove a lot of stress from busy owners, and the team aims to make each walk the highlight of your dog's day! Regular walks lead to positive changes in behaviour; providing essential physical activity and mental stimulation to improve health and wellbeing. They allow dogs the chance to play, socialise, exercise and explore new sights and smells, before returning home happy and tired.

We Love Pets promise that they will never pack walk your dog, therefore ensuring that safety and wellbeing are paramount. Instead, dogs are carefully matched with one or two others for maximum enjoyment and socialisation. A one-to-one dog walking service is also available for dogs who require some extra TLC whilst experiencing the big wide world.

The team at We Love Pets are always on hand to help - contact Catherine to discuss your pet care needs and tailor a plan that's perfect for you.



On the search for the purrfect pet care?

Look no fur-ther! We Love Pets Ringwood offer the best care for all of your pets. Whether they are furry, feathered or scaly. Animal welfare is our top priority.

If you require dog walking, home boarding, day care or pet visits, We Love Pets Ringwood are happy to help!

Contact: Catherine

07438 536040

ringwood@welovepets.email

welovepets.care/branch/ringwood



WHATS ON



Ringwood Lantern of Remembrance

SHINING IN MARCH IN HONOUR OF

DATE OF DEATH	NAME	RANK	REGIMENT OR SHIP
03/03/1944	Peter Norman Brown	Fg. Officer	RAFVR
08/03/1944	Reginald Douglas Privett	Aircraftman 1 st Class	RAFVR
10/03/1917	Edwin Elliott Phair	Corporal	ASC
10/03/1917	Barry Martin Topp	Private	1 st Bn, R Berks
10/03/1941	Roy Edward Greenfield	Trooper	RAC
11/03/1917	Frank J Minty	Private	1/4 th Bn, Hamps
21/03/1918	Ernest Victor Cox	Private	9 Coy, MGC
21/03/1918	Sydney Herbert Minchington	Sergeant	11 th Bn, Essex
22/03/1942	Cecil Leslie Bowey	Aircraftman 2 nd Class	234 Sqn, RAFVR
24/03/1918	Raymond George Fall Perrett	Private	7 th Bn, DCLI
25/03/1918	Richard Lawrence Wilson	Private	2 nd Bn, Dors
26/03/1918	William Charles Rawlings	Rifleman	18 th Bn, KRRC
26/03/1941	Mark Edlin Welby	Lt. Commander	HMS Nile
27/03/1943	Cyril Frank Seymour	Gunner	4 th Maritime Regt
27/03/1944	Keith Wyatt Pilbrow	Aircraftman 2 nd Class	RAFVR
28/03/1918	Albert D Bartlett	Private	8 th Bn, Glos
28/03/1945	Albert George Seymour	Lance Corporal	22 nd Dns, RAC
31/03/1943	Gerald Richard Lynham	Captain	Royal Engineers

Lest We Forget

WEDDING FAYRE at the MEETING HOUSE

29th & 30th March 2025

10am-4pm

"You are invited to come and visit our beautiful Venue".

Come & meet our local wedding suppliers who are looking to fulfil all your needs to create "Your Special Day"

22 Meeting House Lane Ringwood BH24 1EY
(Opposite bus stop main car park)
Tel : 01425 480656
info@ringwoodmeetinghouse.org



Fordingbridge Conservation Group

at Bishop's Pond - 2025

Bishop's Pond Conservation Site is at the corner of Normandy Way and Cottage Mews, Fordingbridge, SP6 1RJ.

Our next work parties, on **Mondays, Saturdays and Sundays, all from 2.00 to 4.00 pm** (weather permitting- see our website) are scheduled for:

January: Monday 6th, Saturday 18th, Sunday 26th
February: Monday 3rd, Saturday 15th, Sunday 23rd
March: Monday 3rd, Saturday 15th, Sunday 23rd



Visit our website- www.fordingbridgeconservation.uk which has a gallery of current photos, and our Facebook page: **Fordingbridge Conservation Group** for more information.




'Merton's dream garden'

Phil Broomfield

The story of the Russell Cotes garden

Thursday 27th February 2025
at 2.00pm Ibsley Village Hall
BH24 3NL

Free to members *This is an afternoon meeting*
£2 to visitors

WHATS ON

BRINGING QUALITY ENTERTAINMENT TO RINGWOOD

View all upcoming events and book tickets on our website

www.thebarringwood.co.uk

21 FEB **THE LITTLE MIX SHOW**
HIGH ENERGY POP CONCERT FOR ALL AGES!
£16



27 FEB **A KNOCKOUT EVENING WITH RICKY HATTON**
MEET AND GREET TICKETS AVAILABLE!
FROM £40

28 FEB **JETHRO - 'WHAT HAPPENED WAS...'**
THE NO1 UK TRIBUTE STARRING MIKE OSMAN **18+**
£25

1 MAR **THE DOLLY SHOW**
VOTED THE UK'S BEST DOLLY PARTON IMPERSONATOR
£25

7 MAR **THE BOWIE EXPERIENCE**
BACK BY POPULAR DEMAND!
£22.50

14 MAR **AN EVENING WITH HARRY REDKNAPP**
MEET AND GREET TICKETS AVAILABLE!
FROM £45

15 MAR **HOMETOWN GLORY CANDLELIT CONCERT**
A TRIBUTE TO ADELE
£26

22 MAR **VOCALIZE LIVE!**
A NIGHT AT THE MUSICALS
£15

29 MAR **THE ILLEGAL EAGLES**
BACK BY POPULAR DEMAND!
£36.50

25 APR **THE COASTAL COMEDY SHOW**
WITH GARY DELANEY! **18+**
£20

26 APR **A VISION OF ELVIS**
STARRING THE INCREDIBLE ROB KINGSLEY
£28



GREYFRIARS
community centre

What's on at Greyfriars!**26 February – Ringwood Antiques Club**

invites you to a talk by professional actor, Wayne Newport, on "Theatrical Superstitions, Myths & Legends" on **26 February** at **7.15 pm**. Tickets for non-members are available at the door for £10.00, or free to members.

22 March – Flipping Fashions

Selling your preloved clothing isn't just about decluttering to buy or sell. Let's begin the adventure! From 12-3pm. Email: flipping.fashion@outlook.com

12 April – Little Pickles Markets

Expecting a baby, your little pickles growing fast, or maybe you've got quality toys, clothes, equipment to sell? Email: adeles@littlepicklesmarkets.co.uk to book a space or for more information.

12 April – Murder Mystery evening

"Bring out your dead" themed evening. Put your detective skills to the test; it's just campanology, how dangerous can it be? £20 per ticket from Greyfriars and Ticketsource. Bring your own drinks, includes a 'Church' supper!

Mon, Tue & Thu– Daniel Cox Language Conversation

Join a fun and friendly Spanish group. £13/ session of £44/4 sessions. Email: dj.cox@live.co.uk

GREYFRIARS MOVIOLA**The Critic**

Set in 1930s London and revolves around a feared theatre critic.

Saturday 22 February 2025 – 2.00 for 2.30 start £6.00

HAVE AN EVENT COMING UP?

All non profit making community events
can be advertised here
FREE OF CHARGE.

Please email your article to editor@rfnews.uk

Hillview Art - An Open Studio Farewell

For many years visitors have enjoyed Open Studios events at Hillview, Linwood, in a Tranquil New Forest setting. From Fri 11th to Monday 14th April there is a final opportunity to see and purchase Ceramics, Glass, Painting, Sculpture and Wood Turning, including many items at clearance prices, before the studio closes forever. Opening times: 10:30am - 4:30pm. Location: Between Red Shoot Inn and Appleslade Car Park (What Three Words - Suspended.Purifier.Breath).

WHATS ON

Tables!

Friendly & Welcoming

Board Games

Table Games

Tea/Coffee

Light Lunch

Every Thursday

10.30am to 1.30pm

Entry £1.00 - Optional Lunch £2.00

Contact: Gillian 07734 679849

The Salvation Army Hall - Christchurch Road - Ringwood BH24 1DL



First Saturday Morning of the Month 10am to 12pm

* Sausage Bap £2.50

* Toasted Tea Cake

& Butter £1.50

* Slice of Cake £2.50

* Coffee or Tea £1.00



HAMPSHIRE SCOUTS
MALAWI VOLUNTEERING TRIP 2025

BARN DANCE FUNDRAISER

15th MARCH 2025

GREYFRIARS COMMUNITY HALL

7.30PM

TICKETS £20

INCLUDES:
- NACHOS WITH CHILLI -
- DESSERT -

DRESS CODE: YOUR BEST WESTERN ATTIRE!

TEXT 07868391184 FOR THE BOOKING FORM.

Ringwood Antiques Club

Join us on the

26 February at 7.15pm

With Jeremy Lamond

Head of Valuations at Woolley & Wallis since 2020. Do join us for a rare and entertaining opportunity. Bring along one item for a valuation but not jewellery or books.



You never know, after his talk you may find a hidden treasure in your attic

You do not have to be an expert in antiques to enjoy the Ringwood Antiques Club just have an interest in fascinating objects and themes

Tickets for non members available on the night at the door price £10.00 or free if you decide to become a full member

Greyfriars Community Centre

4 Christchurch Road, Ringwood, BH24 1DW

HAMPSHIRE MOVIOLA
IN ASSOCIATION WITH
GREYFRIARS COMMUNITY CENTRE
PRESENTS

"THRILLING...
MCKELLEN & ARTERTON DELIVER
EXCEPTIONAL
PERFORMANCES"
-THE CRITIC-

"SUPERB...
A DELICIOUS THRILLER
A MASTERCLASS
FROM MCKELLEN"
-THE CRITIC-

SET IN 1930S LONDON, +THE CRITIC+ REVOLVES AROUND A FEARED THEATER CRITIC (IAN MCKELLEN). HIS LOYAL ASSISTANT, A NEWSPAPER OWNER (MARK STRONG) WHO SEEKS TO ELIMINATE THE CRITIC, AND AN ACTRESS (GEMMA ARTERTON) WHO HAS BEEN DEVASTATED BY HIS SCATHING REVIEWS. AS THE CRITIC FIGHTS FOR HIS SURVIVAL, THE OTHERS FIND THEMSELVES ENTANGLED IN A WEB OF BLACKMAIL, DECEIT, AND MURDER.

SATURDAY 22 FEBRUARY
2.00 FOR 2.30 START
TICKETS £6

tickets available at greyfriars and ticketsource



St IVES HOUSE

COUNTRY HOUSE CARE

A Care South home for residential and dementia care



Scan the QR code to find out more, hear from residents and meet the Home Manager.

Your trusted local care home in the heart of your community



CQC rating

Good

November 2023

Horton Road | Ashley Heath | BH24 2EE

01425 209464 | care-south.co.uk

Proud to be part of Care South, a not-for-profit charity and leading provider of residential, dementia and nursing care, as well as care at home services across the south of England. Registered Charity No. 1014697.
* Correct at time of print.

Care South

It's the care that counts...

HISTORY & NEWS

New Towns, Triangular Castles, Things Lost and Opening Doors



The Ringwood Society have just announced their programme of events for 2025; including how Ringwood nearly became a mega town and the potential to look behind some closed doors, you perhaps never knew existed.

First on the calendar is a talk by Society member; Ken Chatfield about designs the London County Council had on the local area to expand with a so called 'new town'. Although ultimately defeated, a glimpse of what could have been gives both lessons from the past and warnings for the future.

The rest of the year includes a trip to Longford Castle (famously triangular in plan), an exhibition on the 'Lost Buildings of Ringwood' at the Meeting House and History Centre, and a

programme of events and activities across the town, tied in with Heritage Open Days in September.

Heritage Open Days is a national scheme which aims to give the opportunity to visit buildings or enjoy events which are not usually accessible to the general public, Bisterne Manor for example usually opens its doors as part of the scheme. The Society is looking to bolster the programme locally this year and are looking for people who have interesting buildings or places who might be willing to join in to contact us to express their willingness to take part, by email info@ringwoodsociety.org.uk

Members of The Society, receive free or discounted rates to events, depending on the event, but non-members are warmly welcomed. Our calendar of events is wide and varied and full details of are available at www.ringwoodsociety.org.uk/events

The Ringwood Society always welcomes new members to support their work with projects and by joining the executive committee. The more members the Society has, the more which can be achieved! Membership of the Society is only £10 a year for a single membership, only £18 per year for a couple, and students receive free membership. Further details can be found on their website www.ringwoodsociety.org.uk



The Ringwood Society

What a Star . . .

Since the passing of Landlord Ian Pepperell in December 2023, Nikki at The Star Inn, has wanted to offer as much support as she is able too - to the Macmillian Caring Locally Christchurch hospice as she can, as it was at the hospice - Ian was looked after in his final days and peacefully free from pain passed away.

Having been introduced to their yearly "Jolly Trolley Appeal" by Star local - Jude Batchelor, bottles of all description are collected for the patients to enjoy a drink on the ward and for the on site raffles as prizes - that the hospice hold frequently to raise funds.

Along with Jude in 2024, the Star collected an impressive amount



of donations, and it earned The Star Inn a 'Golden Partner Award' with MCL - it was then Nikki decided to organise a special event to raise money for the charity, She approached local band 'Cadence' who offered to play a fee free gig, Tickets were sold out in less than 24 hours for the event, and with the kindness of lots of local independent businesses prizes collected for a raffle, the fundraiser was held on Saturday 11th January 2025, and was a huge



success, resulting in Nikki smashing her £1000 target... with a final total of £1528.50 donated to the charity.

Nikki and Team Star are looking to hold a similar event in Spring/ Summer of this year to continue to spread the word of the amazing care that is given by Christchurch Macmillian Hospice to people with terminal cancer and their families.

Nikki wishes to Thank everyone who supported her in this event and continues to support her at The Star Inn.

Pictured - Lin Sharp (Fundraising and Communications Director, Macmillian Caring Locally) with Nikki Pepperell (Owner, The Star Inn) and Local band 'Cadence' and the Star Customers at the event.

HISTORY & NEWS

Doris Champion - Ringwoods Longest Resident

Doris Eva Champion (nee Hawkins) was born on December 15th 1922 and has lived in Ringwood all of her life except for when she was in the forces ATS during WW2.

She left school at 14 and went to work as a kitchen assistant in a house in Matchams House grounds. Soon after she arrived the cook had an argument with the butler and immediately left, Doris took over cooking duties and carried on in that role as the household enjoyed her meals.

When the war broke out she decided she wanted to join up but she had to wait until 1940 when she was 18. After training she excelled at driving cars and lorries, she was stationed in Scotland (North of the Firth of Forth and Dundee on the West Coast. She drove Bedford lorries transporting Service Engineers and delivering Spares and Ammunition to the Anti-Aircraft batteries along the West Coast. When the Germans concentrated their air raids on London she was transferred South and she was stationed at Park Royal London where Princess Elizabeth was stationed (not permanently). She travelled to gun battery sites in and around London and on the Kent Coast.

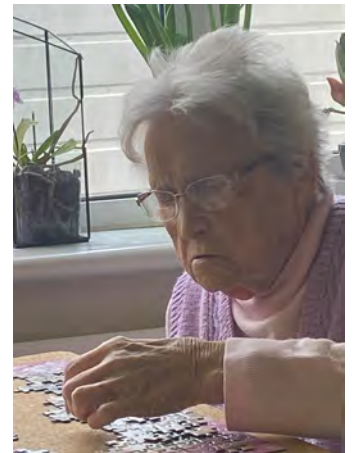
After the war was over using her demob payment she purchased a convertible Ford car from a lady who was moving abroad and returned home to Ringwood to her parents small holding which was at the end of Westbury Road and where Poplar Way is now. She got a job driving a milk van and delivering milk around Ringwood.

In 1946 she married her husband Gordon Champion and they had four children Eric, Margaret, Brian and Edna. When the three eldest children were School age and the youngest Edna was looked after by a neighbour in Wessex Estate Doris got a job at Hale's

Nursery on the Fordingbridge Road driving a tractor while the other ladies planted or picked the vegetables and flowers etc. She then worked at Wright Rain Crow for many years and eventually retired in the early 1980's but needing something to keep herself busy she took over a football pools round and worked as a Lollipop Lady at the junction of Quomp, School Lane and Mansfield Road.

Her husband Gordon passed away in October 1992 and in 1994 she moved from College Road to a bungalow in the Highfield area where she still lives on her own with assistance from her four children and also a couple of helpers who pop in twice a day to check on her to ensure she takes her medication etc.

She keeps herself busy doing jigsaw puzzles and wordsearch puzzles. Just before Christmas she celebrated her 102nd birthday and although her short term memory is a bit erratic her long term memory is quite good. She was recently asked to visit Ringwood Infant School (taken by her eldest son Eric) to speak to the children and answer questions which she really enjoyed.



RF RECYCLING GROUP
FORMERLY RINGWOOD & FORDINGBRIDGE SKIP HIRE



Your Local Skip Hire & Waste Recycling Experts

OUR HIRE SERVICES:

- 4, 6, 8, 10 & 12 Yard Skips
- 15 & 40 Yard Roll On / Roll Off Bins
- Man & Van Waste Collection
- Waste Bags (Great for smaller jobs)
- Tip at our Waste Recycling Site



BOOK ONLINE:
www.rfrecyclinggroup.co.uk

Call: 01425 652696

Caxtons

Of Fordingbridge

Hardware Shop of the Ringwood and Fordingbridge area

Garden Essentials

Watering cans, hose fittings, lawn seed, plant feed, weedkiller, Slug bait, tomato feed, lawn care, pest control

Seeds

Quality flower and vegetable seeds
Including the celebrated Franchi Seeds of Italy

Tools

Hand tools, forks, spades, saws, secateurs and rakes

Private Car Park

Caxton Decor

Tel 01425 652700 / 653489
26-30 Salisbury Street, Fordingbridge





Like us on Facebook

NEWS



ROBERT'S JEWELLERS

Roberts Independent Jewellers
18-20 High Street, Ringwood, Hants, BH24 1AF.
Tel: 01425 483838

GOLD HAS HIT RECORD HIGHS



SELL TO A TRUSTED LOCAL FAMILY BUSINESS WHICH HAS BEEN ESTABLISHED SINCE 2000

TOP PRICES PAID FOR ALL YOUR GOLD, SILVER AND PLATINUM JEWELLERY. CASH OR BANK TRANSFER.

WE BUY ITEMS IN ANY CONDITION, SINGLE EARRINGS, BROKEN CHAINS!!

WE ARE ALSO INTERESTED IN GOOD QUALITY FINE JEWELLERY

Tile Emporium has been an established business in Ringwood since 2016, they have had a rebrand, Tile Emporium is now trading as... Tiles of Ringwood!

This is exciting news for the only independent tile company in Ringwood, the same experienced staff are thrilled with the rebrand, especially the new colour scheme.

Kris Iona the managing director of Tiles of Ringwood has said: "It brings me great pleasure to announce the new name and rebrand of Tiles of Ringwood, I felt it was the right time to change the name and incorporate Ringwood into our name, I am very pleased with the new branding, the colour really stands out on the building! We have only had positive feedback from all our regular tradesmen and retail clients, we really appreciate the kind words and support.

We are in the process of changing lots of displays within the showroom so feel free to pop in for some inspiration for your new tiling project, we still have many sale tiles available from £5m2, they are selling quickly, a bargain awaits you. I would like to take this opportunity to personally thank all our clients over the past 9 years, it is very much appreciated that local Ringwood clients and beyond support our Ringwood business!"

Tiles of Ringwood have many different tile collections, from as small as metro style brick tiles to large format slabs 120x278cm size tiles, they have an array of different colours and finishes for all requirements, they cater for all budgets for pretty much every room in your home. The showroom is open Monday-Friday 8am-5pm & Saturdays 9am-1pm.

The trade desk is also open the same hours as the above, fully equipped to service the professional tiler to the weekend DIYer, the friendly Tiles of Ringwood team are on hand to give expert advice on any tiling requirement.

Tiles of Ringwood is located at Unit A, Ringwood Trading Estate, Castleman Way, Ringwood, BH24 3BA (Opposite the Railway pub)

Contact number is 01425 478769

Email addresses are kris@tilesofringwood.uk or beckie@tilesofringwood.uk

T

ESTD 2002



with GRACE

interior furnishings & unique gifts
an exquisite selection of interior furnishings & gorgeous goodies

silk flowers for weddings & your home
creating forever flower wreaths, bouquets & arrangements using the finest silk flowers

56 High Street • Ringwood • BH24 1AG

www.with-grace.uk • contact@with-grace.uk
ig: withgrace_ • fb: With Grace • mb: 07786 074465





TILES of RINGWOOD

Ringwood's Independent Tile Company
Experienced Staff
Huge Tile Collection
Delivery Service Offered
Trade Materials in Stock

Tiles of Ringwood
Unit A, Ringwood Trading Estate,
Castleman Way, Ringwood
BH24 3BA 01425 478769



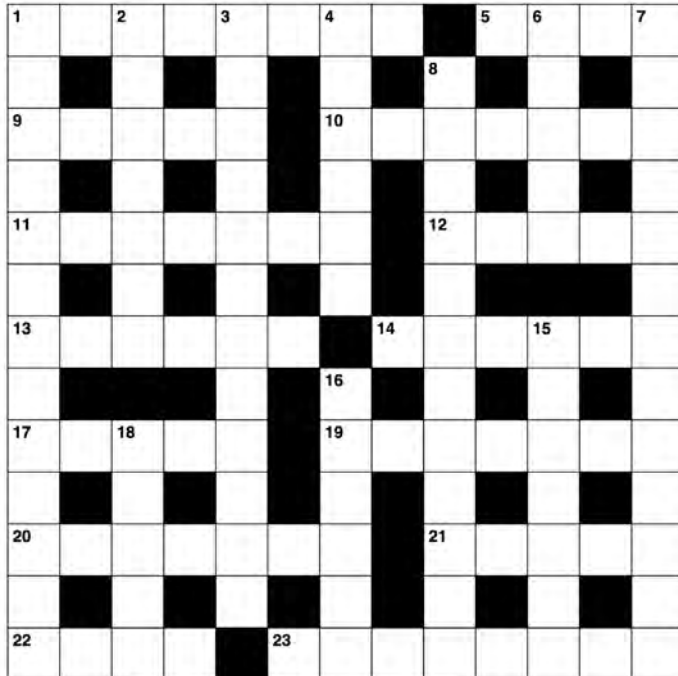
Puzzle Corner

SPONSORED BY BURLEY'S HOME CARE,
AT THE HEART OF THE COMMUNITY



**BURLEY'S
HOME CARE**

Crossword



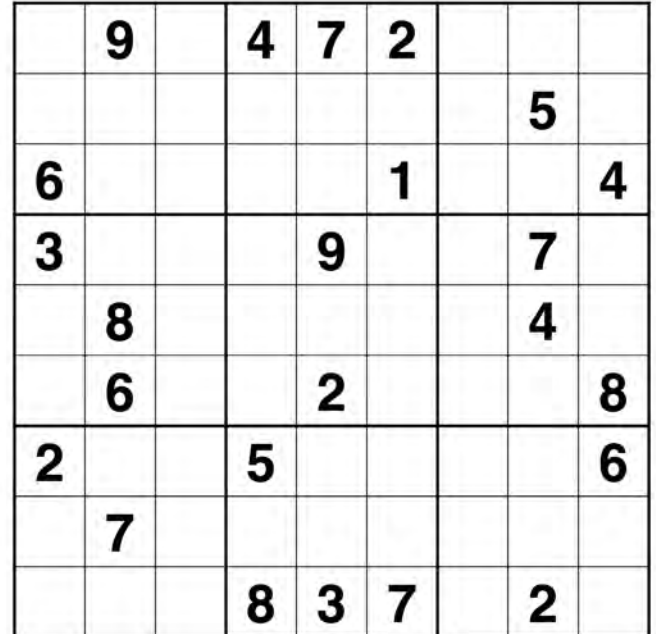
Across

- 1 - Universal in extent (8)
- 5 - Ward (anag) (4)
- 9 - Horse's cry (5)
- 10 - Rich fish soup (7)
- 11 - Witty saying (7)
- 12 - Assembly (5)
- 13 - Type of muscle (6)
- 14 - Get by with what is available (4,2)
- 17 - Fourth month (5)
- 19 - Get back together (7)
- 20 - Pancreatic hormone (7)
- 21 - Singing voices (5)
- 22 - Home for a bird (4)
- 23 - Protector; guardian (8)

Down

- 1 - Close mental application (13)
- 2 - Instruction (7)
- 3 - Preternatural (5-7)
- 4 - Money received (6)
- 6 - Wireless (5)
- 7 - Computer program for writing documents (4,9)
- 8 - Pay tribute to another (12)
- 15 - Lived (7)
- 16 - King's son (6)
- 18 - Takes a break (5)

Sudoku



Award-Winning Home Care & Live-in Care Services

We are turning a new page! Though our appearance may be evolving, rest assured that the long-standing quality care we provide remains unchanged.

Say hello to our new logo!



**BURLEY'S
HOME CARE**
Keeping your heart where it belongs

ANSWERS FOR THE LAST ISSUE



NEWS

Avon Valley Men's Shed supports Fordingbridge Greener Living's Community Fridge

Last Friday (14th February) saw the result of the coming together of two Fordingbridge stalwarts, when the Avon Valley Shed installed a set of shelves for Fordingbridge Greener Living's Community Fridge. The Fridge team had asked the Avon Valley Shed to build, supply and install a set of shelves to store ambient foods in a more presentable and tidy manner in Fordingbridge Library where the Community Fridge is housed.

The Avon Valley Shed is a group of people who have got together to focus on various activities, including charitable community work, on a non-profit basis, on projects, share skills and build friendships. The "Shed" was originally conceived to help men reduce feelings of isolation and loneliness, supporting members' mental health and well-being.

Fordingbridge Greener Living's Community Fridge is based in Fordingbridge Library and its purpose is to reduce food waste by collecting food which supermarkets can no longer sell, but which is perfectly safe to consume. The food in the Fridge is available for anyone in the community to collect and use, free of charge.

Alison Ayling, Team Leader of the Community Fridge, thanked the Avon Valley Shed volunteers for their work which indeed enhances the appearance of the fridge area in the Library. "They were very efficient in their work, and easy to deal with as they are very approachable", she said.

The photo depicts Alison with Kevin Graves (left) and Bob Mellors (right) of the Avon Valley Shed.

To contact the Avon Valley Shed, email Enquiries@AvonValleyShed.org.uk or call 07428 590090

To contact the Community Fridge, email fordingbridgegreenerliving@gmail.com or call 07798 555500



Ellingham, Harbridge & Ibsley Parish Council

NOTICE OF TENDER

ICE CREAM

PITCH

CONCESSION

Tenders are invited to sell ice cream, hot and cold non-alcoholic drinks from a mobile ice cream van parked on a designated parking area at the Moyles Court Ford, Rockford, Ringwood.

The concession is to operate from 01 April 2025 to 31 March 2028.

The Parish Council reserves the right to accept or reject any tender.

The tender application forms and details of the conditions of operation are obtainable from the Parish Clerk, Ellingham, Harbridge & Ibsley Parish Council, PO Box 9710, Ringwood, Hants, BH24 9HF Tel: 07840 146506

Email:

Clerk@ellinghamharbridgeiblsley-pc.gov.uk

Offers in a sealed envelope marked "Ice Cream Pitch Concession" to be received at the above address by 5.00pm on Sunday 23 March 2025.

Late applications will not be considered.

- ▼ Van Sales
- ▼ Daily Rental
- ▼ Self Removal Packages
- ▼ Bespoke Finance Packages
- ▼ Private & Corporate Customers
- ▼ Specialist Equipment Hire & Sale
- ▼ Short & Long Term Vehicle Rental

10% Discount offered on production of this advert.

**CARS
VANS
TIPPERS
TRUCKS
MINI BUSES**

Economy hire (Southern) Ltd

Economy House, Unit 18, Endeavour Business Park, Crow Arch Lane, Ringwood, Hampshire BH24 1HP
Telephone 01425 474593

Opening Hours:- Mon to Fri 8.00am - 5.30pm Sat 8.00am - 1.00pm Sun Closed

website: www.economyhire.co.uk

Bickerley Bus Appeal

As part of their ongoing 10-year anniversary celebrations Lovitaly restaurant provided the venue (foc) for a presentation to the Bickerley Bus Appeal of funds raised by Ringwood Round Table. Table members Craig Adams and Matthew Ring handed over a cheque for £2500.00 to a very grateful Philip Grant of the Bickerley Green Care Home. Donations collection boxes along with funds raised through various events staged by Lovitaly also provided over £1200 to the appeal and Town Mayor Cllr Rae Frederick confirmed a desire to contribute from the council held charity reserve. Further to this other sponsors including Economy Vehicle Hire and the Ringwood & Fordingbridge Business Network organisation have pledged financial support to be confirmed at meetings in the near future. The purchase of a very necessary minibus at Bickerley Green is of course an expensive project and despite the immense generosity of the cohort of donors (and others) mentioned here the need for funds remains urgent. If you would like further information or are able to contribute please contact Tony Ring by email at picket.hill@btinternet.com or direct to Tracey Cotterill or Philip Grant at Bickerley Green - 01425 473312'



Clear Choice Solutions Ltd

Karl Scriven's family run business with over 20 years of experience based in Ringwood serving all Dorset, Hampshire & Wiltshire

- uPVC Windows & Doors
- Aluminium Windows & Doors
- Bi-folds
- Lanterns
- Facias, Sofits & Cladding
- Maintenance & Repairs



[clear.choicesolutionsltd](https://www.instagram.com/clear.choicesolutionsltd)



[clear choice solutions](https://www.facebook.com/clear.choice.solutions)



Contact: Karl Scriven
number: 07718926175

Email:

clearchoicesolutionslimited@gmail.com

Checkatrade
Approved and Guaranteed

Caravan & Motorhome Service and Repair



PROPEX HEATING AND LEISURE LTD

UNIT B3, PLATINUM JUBILEE BUSINESS PARK, RINGWOOD, BH24 3FW

**Telephone:
01425 486950**

Propexheatsource.co.uk

- Caravan and Motorhome Servicing
- Habitation Checks
- Safety Checks
- Annual Servicing
- Water and Damp Ingress Reports
- Whale Service and Warranty
- Heater Installations and Repairs
- Electric Installations
- Fridge Repairs
- LPG Vapour Tank Installations



**We are looking for a
Full time Office Administrator**

Situations Vacant

Are you flexible, reliable and have a helpful manner, do you have a good level of computer & IT skills, including Sage 50.

We need someone to work alongside our colleague in our busy office where you will be required to answer phone calls both to trade and retail customers to help receive and process orders and payments.

Process orders taken through our website

Book jobs into our workshop eg. Caravan service/Habitation checks, Installations etc.

Packing of website orders when required

This position will suit someone who likes to keep busy and works well in a small team, sometimes able to help in other areas if required.

Hours are 8.30am – 5.00pm Monday to Friday

28 days holiday to include bank holidays

Work Place Pension scheme (opt out if requested)

Competitive Salery

If this sound like it might be you then please get in touch, as we would love to hear from you.

Phone, write or email sally@propexheatsource.co.uk



Top things to do in winter in the New Forest

1. **Crisp winter walks.** Enjoy the peace of the New Forest at a time when the tracks and trails are quieter. There is beauty all around, and so much to see. Try the Burley walk with views of heathland and wetland, or Whitefield Moor with its romantic hilltop views – perfect at sunset. Travelling with a family? Why not take your little ones for a walk? They'd love to swish their wellies through the carpets of leaves, and see if they can identify the bare trees from their structure alone.
 2. **Bird watching.** The winter months are a great time of year to do some bird watching. A great place to visit for some birding in the winter is the Hampshire and Isle of Wight Wildlife Trust's Blashford Lakes nature reserve in the Avon Valley, near Ringwood. Here, huge flocks of overwintering birds fly onto the lakes to roost during the winter months.
 3. **And breathe... plan your detox.** Relax as you indulge yourself in the tranquillity of a wonderful spa day or spa stay at one of the beautiful Hotels in the New Forest. Spas at Careys Manor Hotel, Balmer Lawn Hotel, Chewton Glen and Lime Wood hotels all offer a luxurious and rejuvenating experience. Add some treatments to your experience such as a full body massage, a specialist massage or body facial wraps, all of which will leave you feeling extra radiant.
 4. **Pub lunches.** There's nothing better than sitting in front of a roaring log fire in one of the New Forest's cosy country pubs after a chilly winter walk. Many of them feature local produce.
 5. **Museums and attractions!** Beaulieu, with its National Motor Museum and Palace House, is a top day out for all the family and it's open every day of the year except Christmas Day. Lymington's St Barbe Museum runs a packed programme of exhibitions and events year-round. And the New Forest Heritage Centre in Lyndhurst offers a fascinating, interactive insight into the Forest's heritage. For bike fans, the Sammy Miller Motorcycle Museum at New Milton houses one of the finest collection of fully restored motorcycles in the world
 6. **Cycle trails.** Two wheels is a great way to explore the New Forest, and if you don't have your own bike there are several places to hire them from. There are miles and miles of off-road tracks and low speed limit roads where you can enjoy a leisurely day riding by herds of ponies in stunning scenery. One of the most popular routes for families is the two miles from Beaulieu to Buckler's Hard. Or, for a longer stretch, the six-and-a-half miles from Brockenhurst to Lyndhurst is a favourite – and all but 0.2 of those miles are off-road tracks.
 7. **Award-winning dining.** Enjoy indulging in fine dining at destination restaurants including The Montagu Arms and Chewton Glen. Many others offer an AA rosette or two, so the New Forest can boast some truly special dining experiences.
 8. **Winter breaks.** Whether it's full-on luxurious pampering you're after or a cosy family stay in a holiday park, the New Forest is a welcoming winter destination. Relax and enjoy getting closer to nature with the promise of a comfortable bed and a hearty breakfast.
- Visit the official tourism website for the New Forest at thenewforest.co.uk for more ideas of what to do in The New Forest.



NEWS

continued from page 1

One of the lovely messages received encapsulated so many audience responses: "just when you think you know a show well, and come along to support, you find yourself to be truly moved by the magic of the culmination of all the aspects. The cast were wonderful and clearly so inspired and empowered by the support surrounding them"

It was a demanding but exciting time staging this amazing show. Students and staff worked extremely hard on all aspects of the production in and out of school hours. Beauty and the Beast is a well-known story and is difficult to put on stage for many reasons. Not only does the standard of performance need to be high, but the Disney magic needs to happen in every performance making it a very challenging show for the production students.

Helen Hawkins the Director/Choreographer was incredibly impressed with the commitment shown from all the students involved, backstage and on stage. It was a joy and privilege to work with such an array of talent and enthusiasm across all year groups from Year 7 to Year 13.



HOPe



Even in winter it is good to get out and enjoy nature and where we live.

I have visited many older people recently who it are unable to do this and have become housebound due to illness or being forced to stop driving.

HOPe strive to bring a little joy into their lives. Sharing items or photos from nature instigates stimulating conversations and enhances wellbeing. They have so many wonderful stories to share too.

If you would like to help us, help those who are feeling lonely this winter please call -

Georgina Towler, Hope Befriending Coordinator on 07936 495 708 or via befriending@hopenewforest.org



GURKHA ASIAN FUSION

Welcome to our Asian Fusion Cuisine restaurant, where we offer a unique blend of flavours from Nepalese, Indian, Thai, and Indo-Chinese cuisines. Our menu is carefully curated to provide a diverse range of options for everyone to enjoy.

Gluten Free, Vegetarian and Vegan Options Available

Sunday Lunch Buffet – Eat As Much As You Like – 12:00 – 3:00pm. Adult – £17, Child- £10

LARGER SPACE AVAILABLE FOR BIRTHDAY, ANNIVERSARIES, FAMILY GATHERINGS, OFFICE PARTIES AND BUSINESS MEETINGS

DELIVERY WITHIN 5 MILES ON ORDER OVER £30

NHS, STUDENTS, BLUE LIGHT CARD, NAVY, MILITARY 10% DISCOUNT DINE IN



Call: 01425 471717

Email: gurkharingwood@gmail.com

Visit: 2 Southampton Road Ringwood, BH24 1HY

Fordingbridge bakery partners with Salvation Army to feed local families

In the heart of Fordingbridge, a simple loaf of bread is making a difference in the lives of those struggling to make ends meet. Thanks to a partnership with a local bakery, The Salvation Army in Fordingbridge can offer free fresh bread and rolls twice a week to people in the local community who struggle to put food on the table.

Belinda's Bakery donates bread and rolls to the Salvation Army on Roundhill throughout the week. The church then opens its doors to give the bread to those who need it:

- Wednesdays: 3pm - 5pm
- Fridays: 9am - 10am

The bakery, a family-owned business, is inspired by a desire to reduce food waste, and making a positive impact while strengthening its bond with the community.

Mike French, Leader of The Salvation Army in Fordingbridge, says this partnership aligns with the church and charity's mission of serving the most vulnerable in the community through practical ways. About 18 families have been helped every week since the partnership started

Mike said: "While a single loaf of bread might not seem like much, its impact on people facing hardship is significant. We are grateful to Belinda's Bakery for this tangible act of compassion that shows kindness can make a real difference. This simple gesture provides much-needed relief for families and individuals struggling financially, easing the burden of their grocery bills and offering a symbol of hope."

"We have a family who comes and gets their week's supply of bread for lunches for each family member for the week. This has enabled them to provide more nutritious lunches for their children, as well as having a little money each week to put aside. It's something small and simple but making a huge difference."

Beyond the bread partnership, The Salvation Army in Fordingbridge, in connection with Fareshare, ensures food that would otherwise be wasted from the local Tesco Express store is distributed to local families. The church gets two donations a week of shelf stable foods that it says supports at least four families a week.

The church also has regular social events and support groups that provide a sense of belonging and reduce isolation, which can be a significant factor for people experiencing financial hardship. These include a 'Tea and Play Cafe' Monday and Friday mornings for those with preschool children - it is free to attend, with refreshments available at a low cost.

For more information about The Salvation Army in Fordingbridge: Fordingbridge | The Salvation Army.



Ringwood & Fordingbridge NEWS

DELIVERY TEAM

We are looking for people to join our delivery team in

Ringwood & Fordingbridge - 3rd Wednesday/Thursday of the month.

Interested, please contact Rae at - Email: sales@rfnews.uk

SMALL ADS

ACCOUNTANCY



Donaldson Ross & Co
Accounts Consultancy
Start-ups
Taxation

e: taxman@donaldsonross.co.uk
www.donaldsonross.co.uk

Call: **01425 480814**

Self Employed
 Accounts/tax returns
 service offered from £199.00
 PA inclusive
 Arrears cases handled
 Contact Booksmart on
 07825 684866.

ALTERATIONS

SHEILA SEAMSTRESS
CLOTHES ALTERATIONS
REPAIRS & ZIP REPLACEMENTS
 Also Shortening and Lengthening of
 CURTAINS
 Call Sheila
 07765 680020 / 01425 477980
Sheilaterry7@googlemail.com
 Fast Friendly and Reliable Service

APPLIANCES

Repairs to:
 Washing Machines - Dishwashers,
 Tumble Driers, Ovens, Hobs
 Refrigeration etc.
 Manufacturer trained
 locally based engineer
 Quality repairs at affordable prices
 Call Mark on 07907 323612

ASBESTOS

ASBESTOS REMOVAL
 Garages, Sheds, Lean-to's
 Roofing & Cladding
 Collection & Dismantling
 Registered Hazardous Waste
 Carrier
 07973 444620
trevieg@outlook.com

BUILDING

G&S BUILDING SERVICE
 Extensions, Structural Alterations,
 Conservatories, Chimney
 Repairs, Garden Walls, &
 Maintenance
 Fully Insured with 25 years exp
 Find us on Checkatrade
 call Simon 01425 473715
 Mobile 07812 140604
s.scammell@btopenworld.com

NEWHAM
BUILDING SERVICES
 Local family business
 Est over 35 years
 Available for Extensions,
 Alterations, Conservatories,
 Driveways, Patios, Garden Walls.
 Free quotes and advice
 07368 877178 or 07900 516986
darrennewham@mac.com

ALEX CUFF
GENERAL BUILDER
 Brickwork & Carpentry,
 Alterations and Building Works
 Timber Structures
 Renovations and more.
 Free Advice & Quotes
 Call 07789 907843
alex_cuff@yahoo.com

CARPENTRY

JSB CARPENTRY
 1st & 2nd Fix
 Custom Furniture
 Kitchens
 Doors
 Upvc Windows and Doors
 Contact Jake on 07398312692
jsbcarpentry8@gmail.com

CARPETS



Kimbers
 THE FLOORING SPECIALIST

Carpets | Amtico
Karndean | Wood

Ringwood:
 01425 464355
www.kimberscarpets.co.uk

Est 1984

CATERING

South Coast Parties
 Providing a delicious & professional
 catering service including

- **Weddings & Parties**
- **Private lunches & dinner parties**
- **Afternoon Tea**
- **Funeral receptions**
- **Corporate events**
- **Canape receptions**

To find out more call Teresa on
 07834 597260 or email
teresa@southcoastparties.co.uk
www.southcoastparties.co.uk

CATTLE GRIDS

CATTLE GRID
 Manufactured to your
 requirements. Contact
 Stuart 07721 742498
 or 01425 476266
 New Forest Metalwork Ltd

CHIMNEYS

No 1 Fires South Coast
Installation, maintenance
and Sweeping
Call Dan on 01425 333760
07457405634
info@no1fires.co.uk
www.no1fires.co.uk

COMPUTERS

DAVID MORLEY
COMPUTER SERVICES
 All Computer-Related Issues Flexible
 and Friendly Local Service Home Visits
 or Drop Off / Collect.
www.davidmorleycomputers.com
david@davidmorleycomputers.com
 07765 424557 / 01425 475642

CLEANING

Eco Oven Clean
 Local and independent
 oven, hob and extraction
 cleaning specialist
 Fully insured
 Contact Jim
 01202 985 306
 07717 441443
info@ecoovenclean.co.uk

DOUBLE GLAZING

THE WINDOW REPAIRMAN
 We specialise in replacing MISTED
 up and BROKEN double
 glazed units.
 Also all types of DOUBLE GLAZING
 REPAIRS to windows, doors, patio
 doors, locks and hinges.
 No call out charge.
 For a free No obligation quotation
 Call Mark on
 07786 597637 & 01425 476862
mark@thewindowrepairman.co.uk

ELECTRICIANS

Forest Edge Electrical Limited
 Highly knowledgeable and experienced
 domestic and commercial electricians.
 We undertake all aspects of electrical
 work electrical testing and inspection,
 rewires and fuse-board changes.
 We specialise in installation of EV
 chargers.
 No job too small.
 First class workmanship and
 competitive prices.
 NICEIC approved.
 07852 37 20 30
www.forestedgeelectrical.co.uk

Electrician
www.Carlyia.co.uk
No job is Too Small

- Extra Lights and Sockets
- Landlord's and Home Buyers Reports
- New Fuseboards
- Rewires
- New installation
- Smoke Alarms
- Experts on Rewires
- Electric Heaters
- Fault Finding
- EV Car Charging Points
- Garden Lights

- ✓ Fully Qualified, Insured and Registered
- ✓ Careful Attention to Detail
- ✓ Reliable and Friendly Service
- ✓ Flexible Hours
- ✓ Satisfaction Guaranteed
- ✓ Proud to be Local

Call Frank now on
(01725) 671 323



Which? Trusted Trader



SMALL ADS**ELECTRICIANS****DOWN TO EARTH**

Peace of mind in your electrics

Call David Rowden
Mobile 07789 123103
Office 01425 461664

Reliable Friendly Service
Electric Vehicle chargers installed
NICEIC APPROVED

JP ELECTRICAL

NICEIC approved electrician.

Reliable and considerate.

All domestic work completed

to a high standard.

Please call Jon on

01425 471909 /

07748195969

FENCING**STEER FENCING**

All types of Fencing and Repair, Decking, Garden Maintenance and Garden Clearance.

Member **Checkatrade**

Please call Graham

07779 127229

01425 475527

THE FENCING SPECIALIST

All types of fencing from Close

Board to Panel Fencing

All work carried out by myself

Not contracted out

07747 182093 & 01425 653105

Member **Checkatrade**

FOOT CARE**RINGWOOD FOOT CARE**

Mobile foot health practitioner

Qualified to treat all aspects

of foot care in your

own home.

Tel: 07544 809578

ringwoodfootcare@gmail.com

FOOT CARE**AVON VALLEY FOOT CARE**

Mobile for home visits

Foot Healthcare Professional

Qualified, insured and DBS

checked to deal with all

aspects of foot health

Tel: 07513 303594

GARAGE DOORS**FOREST GARAGE DOORS**

All types of door supplied & fitted

24/7 Repairs - No callout charge

20 + years experience

Free no obligation quotations

Family run local business

Telephone 01425 473446

forestgaragedoors.co.uk

Member of **Checkatrade**

GARDENING

Driveway & Patio Landscaping Specialist
Brett & Marshalls Approved Installer

**Block Paving - Driveways
Patio - All Groundworks**
Reliable & Professional Service

Mobile: 07717873701
Tel: 01425 501304

www.petewatton.co.uk

**PERSONAL, AFFORDABLE****GARDEN DESIGN**

Looking for local gardens

this spring. PAYG scheme.

Free consultation -

01425 483281

www.stepbystepgardendesign.co.uk

GARDENING**NEW FOREST TREE & GARDEN SERVICES**

All aspects of Tree &

Hedge Cutting

Regular Grass Cutting Service

All types of Fencing

Stump Grinding. Rubbish Removal

Reg waste carrier - Nptc Certified

Fully insured - For Friendly Advice

& Free Estimates

01425 460422 07833 778306

Heatherfield, Sande Heath, SP6 1PY

Al's Maintenance & Clearance

Chimney Repairs

Scrap Metal Removal

Garden, Garage, Ground

Clearance

For a free quote call

M: 07796 047866

L: 01425 402467

A E Matthews

General Garden Maintenance

Hedge Trimming &

Shrub Pruning,

Fencing & Repairs to Panels

Contact Andrew

T: 01425 616661

Mob: 07792 056076

PHILIP STALLARD

OFF ROAD Parking & Driveways Specialist

From Shingle to Block Paving

All types of Fencing

Trees, Hedges removed

Mini digger work from

Footing to Drainage

Work carries out by myself

(not contracted out)

Fast local service

07747 182093 & 01425 653105

HAIR & BEAUTY**NATASHA MACKAY'S HAIRDRESSING**

Men, Women and

Children's Cuts

Ringwood, Verwood,

Alderholt & Fordingbridge

Telephone

07518 714291

HAIR & BEAUTY**Mobile Hairdressing**

Styling, Perming, Colouring

Competitive Pricing

With

Caroline

20 years + experience

07970 871341

SHARRON'S MOBILE HAIRDRESSING

Over 20 years experience

For men, women and children

01425 461067 &

07830 679738

HEMOCARE

Professional private care offered in your own home. Whatever help you need, Hours to suit and affordable.

Call or text Flo

07443 634029

HOME CLEARANCE**RINGWOOD HOUSE CLEARANCE**

For a reliable service choose the professional - 30 years trade experience - Free quotes - No local call-out-fee!

Liaise with Solicitors &

Estate Agents

01425 479544 &

07778 253300

RINGWOOD AUCTIONS

House clearance undertaken

Reliable, Experienced,

Professional Service.

Free Quotation.

Competitive Fees.

01425 480178 &

07701 05144

ANDREW PARKER

Let us look after your

Hedges, Borders,

Shrubs, Weeding,

Planting and Lawns.

Call Andy on

07880 548268

SMALL ADS

HOME IMP



All aspects of Groundworks

- Patios
- Driveways
- Drainage
- Foundations
- Fencing

With over 15 years experience

For a free quote or advice please call on 07724 619 536 or email mc_groundworks@outlook.com

Proud members of Checkatrade

Resinateuk.co.uk

Paving contractor
Resin bonded
Block paving
Concrete
Gravel
Fencing
Drainage & Soakaways
Call Justin

for free friendly advise

07733 33 33 65

01202 828 382

LOCAL HANDYMAN

for all those little jobs around the house and garden.

Gutter, Facias, Fencing, Glazing,
Locks & Handles, Electrical,
Plumbing, Painting & Decorating

Call Alan for free quotes

Telephone 07510 633816

SMALL WORKS LOCAL HANDYMAN



For all those little jobs around the house.

Small Electrical, Carpentry, Painting & Decorating

Affordable Rates - Free

Estimates Gez on

07885 440547

geraldcrane@btinternet.com

PAINTER & DECORATOR TIM PRISCOTT



Internal and External Painting

25+ years professional experience

Please phone for a quote

01425 291180 or

07519 380721



PEST CONTROL

RINGWOOD PEST CONTROL

Rodents, Moles, Wasps, Insects

Fast Efficient 7 Day Service

Domestic & Commercial Contracts

Fully Qualified & insured

01425 474 111

The Royal Society of Health

Certificated

PET SERVICES

PAWS MOORE

www.pawsmore.co.uk

Pet Sitting in your home, Dog Walking and Pet Care visits.

Reliable and experienced

Fully insured and Police

checked. References

available. Ringwood.

Call Linda on 07809 370867

PLASTERING

C.R. SMALL Plasterer

Float & Set - Skimming

Rendering - Stuid Walling

Drylining - Coving

Ceilings Repaired or Renewed

General Property Maintenance

Over 30 years experience

No job too small

01425 511226 & 07747 071873

CONPLAS

INTERIOR PLASTERING

PROFESSIONAL

All aspects undertaken

Float and Set

Skimming, Drylining

Punctual, Professional and

Reliable.

Call for a free quote.

07764439983

PLUMBING

BRYAN COOK

Gas Plumbing & Heating

Boiler Servicing & Repair

Gas Safe Registered

No. 183241

01425 470951 &

07908 060826

PLUMBING

M.R.T.

Plumbing & Heating

All aspects of plumbing

undertaken 7 days a week

friendly, reliable service

Kitchen Tap £85.00

Supplied & Fitted - 3 designs

Call Martin 07920 524251

Plumbing & Heating Ltd
PAUL CANFIELD
Est 1994 Local Family Business.
Central heating boilers gas & LPG.
Servicing maintenance & repairs
New boiler supply and installation.
Free quotes. General plumbing.

Tel: 01425 478481 | 07710239272
Email: pcanfieldltd@gmail.com

POINTING

SNS POINTING

Relaible Quality Pointing,

Re-pointing & Lime Pointing

Brick & Stonework Repairs

Chimney, Garden Walls & Patios

Fully insured,

References available

Call Simon 01202 512040

Mobile 07812140604

RECORDS

"THE RECORD COLLECTOR"

WANTED

Your old LP's-Records

60's 70's 80's 90's Rock-Pop etc.

CASH PAID

Telephone 07961 228645

RESTAURANTS

Gurkha Asian Fusion

Nepalese and Indian

Cuisine

Take Away or Dine In

Open Tuesday to Sunday

Contact us on

01425 471717

ROOFING

GREGORY ADAMS ROOFING

Flat Roofing Specialists

Slating, Tiling, & Repairs

Fully Insured.

Free Estimates

Telephone

01425 476635

Ringwood Roofing Co.

All aspect of roofing

Works undertaken

07908 327 173

Contact us today

info@ringwoodroofing.com

TRAVEL

Fred Olsen Travel Agents

Worldwide Holidays, Ocean &
River Cruising, Tours, Ski, Safari
and much more, much more....

Call Rose 01425 201669

fredolsentravelagents.co.uk

J & L Maintenance

Roof Repairs - Chimneys
UPVC Fascia & Guttering
Brickwork & Repointing
Services

Flat Roof Repairs

References available Fully
insured

Free estimates & advice

Tel: 01425 688394

SMALL ADS & BEREAVEMENTS

TREE WORK

ARBORGRIND

Tree Surgery, Stump Grinding,
Hedge Cutting and Removal.
NPTC Certified, Fully Insured.
Hardwood logs available.

Free estimates providing a
reliable service with over
15 years experience.

01425 483331 / 07860 467952
www.arborgrind.co.uk

TREE WORK

THIRD GENERATION TREE & GARDENING SERVICES

We cover a wide range of garden services

- Lawn and hedge trimming
- Shaping and pruning
- Tree care
- Root grinding
- Rubbish removal
- Gutter and fascias cleaning
- Patio cleaning

All aspects of gardening work taken
For a free friendly quotation don't
hesitate to contact the team on -

Mobile - 07777 189684

Email -

thirdgenerationtreeandgarden@gmail.com

TUTORING

MATHS TUTOR

KS2 and lower KS3
Experienced and friendly
specialist maths tutor.

Call Andy:

07587 171457

ringwoodmathstutor@gmail.com

WOODWORK

YOLI
WOODWORK • ART • LIFE



- Outdoor Wooden Play Areas
- Bespoke Furniture
- Mud Kitchens
- And More

GET IN TOUCH FOR A QUOTE

07999 233399



MISC



Need a suit?

Dislike shopping?
Can't find the time?

Made to measure tailoring
Ladies and Gent suits and
separates chosen in the
comfort of your own home.
Anytime - Day or Evening
~ Alterations ~

- Choose from over 700 cloth samples
 - Styles to suit all tastes
 - Personally delivered
 - Prices to suit all pockets
- Telephone Bill King
(01425) 654307

RINGWOODS OLD TIMERS

*Fordingbridge and
surrounding areas covered*

1 Bricky ~ 1 Plasterer ~ 1 Painter

Available Mornings

Site trained from youngsters,

looking for smaller jobs

Why use an Old Timer?

We bring years of experience
to your job. Try us!

Brickwork

PLASTERING PAINTING

ROOFING

Telephone 07310 933912

Thank you

DELIVERY TEAM

We are looking for people
to join the delivery team
in Ringwood &
Fordingbridge.
Once a month on a
Wednesday or
Thursday.

Interested, please contact
us at.

Email:

office@rfnews.uk

SMITH Robert & Delphine.
*Congratulations mum and dad
on your Platinum
Wedding Anniversary
on 12 March.*
Love Martin and Jenette x

ANNOUNCEMENTS

SHUTLER

Valerie

Passed away peacefully on

Monday 20th January 2025, aged 85 years.

Funeral service to be held at All Saints Church, Harbridge on
Thursday 20th February 2025 at 1pm. All flowers welcome
and donations if desired to Alzheimers Society c/o
I N Newman Ltd, 22, High street, Fordingbridge,
SP6 1AX, Tel 01425 656286

BRYANT

Joan Lucy (née Coy)

Passed away peacefully on 9th January 2025 aged 93 years.
Beloved widow of Jack, much loved mother of Caroline and
Clifford, adored grandmother of Oliver, Chloe, Christopher,
Paul and Freddie. Great grandmother of Maisie and Rory.
There will be a private family funeral, but any enquiries please
to Eden Funeral Directors on 01425 837080

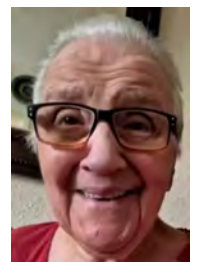
RAYMOND

"John" Steel

Sadly John passed away in Bournemouth Hospital on 2nd
February, 2025, ages 81. Late partner to his beloved Anne
and step father to Janet and the late Lynda. Cremation has
taken place but there will be a Celebration of John's life at
Ringwood Conservative Club on 21st February at 12.00.
Donations can be made to the British Heart Foundation and
Cancer Research UK.

GWENDOLINE BARBARA ZACHARIADES

It is with deep sorrow and heavy hearts that
we announce the passing of Gwendoline
Barbara Zachariades, who peacefully passed
away on 14 January, at the age of 90, after a
courageous and enduring battle with
dementia. Gwendoline was the cherished
wife of the late Andrew, a devoted mother
to her sons and daughter, and a loving
grandmother. Her kindness, warmth, and
strength touched the lives of all who knew her. She will be
profoundly missed by her family, friends, and all who had the
privilege of sharing in her life. The funeral has already taken
place, and she will forever be in our hearts.



STEELE

Eric

Died peacefully on 9th January 2025 aged 94 years. Now at
rest with his beloved wife Sheila. Father of Alan and Anita and
much loved Grandad and Great-Grandad. A private family
cremation has already taken place.

PROPERTY

Let's look at what's happening in the property market. And ask, is now a good time to buy or sell?

- * In 2024 the property market ended on a positive note.
- * The Bank of England interest rate reductions in August, November and February helped invigorate the market.
- * Prices held up well. The Halifax HPI says house prices rose 3.3% in 2024. (There was a small 0.2% monthly fall in December.)
- * And the Boxing Day Bounce was significant. Right move says Boxing Day 2024 was the busiest ever for new property listings and traffic to their site.
- * The stats show that people are motivated to move in 2025.

Where's the market going?

- * House prices: Most forecasts suggest average house prices nationally will rise slightly in 2025.
- * Knight Frank forecasts prices will rise 2.5%.
- * Savills forecasts a 4% rise, dependent on interest rates.
- * Interest rates: Interest rates haven't come down as fast as many anticipated.
- * Stubborn inflation might slow the pace of future cuts.
- * However, most forecasts suggest that the Bank of England base rate will trend firmly downwards this year.
- * Santander forecasts it will fall from 4.75% to 3.75% by the end of next year.
- * Barclays forecasts the rate could fall further to 3.5%, over the same period.
- * This should, in turn, make mortgages cheaper and buying more attractive.

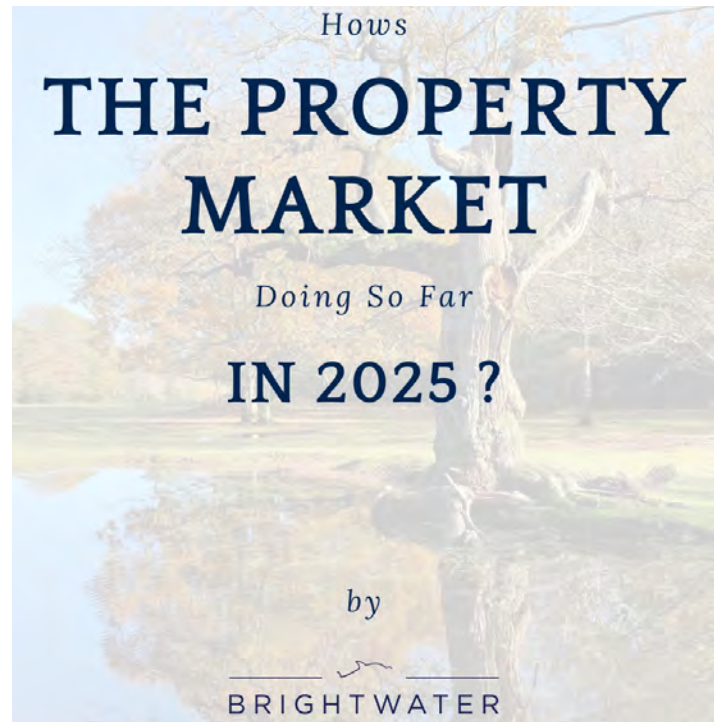
A summary of the market so far in 2025

- * Prices seem unlikely to race ahead like they did in 2020 and 2021; we anticipate they'll remain steady.
- * If you want to buy there is a good choice of properties on the market at attractive prices.
- * If you want to sell there are a lot of would-be buyers out there. (As always, correct pricing and professional marketing will be key to finding them.)

So it could be a good time to consider a move

One last thing: Remember that price and market forecasts are based on national averages. They can and do vary locally. So, if you're considering selling and want to know what's happening in your area, it's best to ask a local expert. As your local experts, we'd be pleased to offer a free market appraisal and valuation.

Do you know of a friend or relative who would find this article useful? Please feel free to share it with them.



Calling On All Land!

We had previously written about the revisions NPPF, an acronym which stands for the National Planning Policy Framework, to address the new Government's planning ambitions to meet its 1.5m homes that it is hoping to deliver during the current term of Parliament. In response, many of our Local Planning Authorities including New Forest District Council, Wiltshire Council, Dorset Council and BCP Council, have put out a "Call for Sites". This is a process that allows land to be put forward and be considered for inclusion within the local plan process for residential development.

The process of promoting land for inclusion within an emerging local plan can be time consuming and very long winded, and whilst sites will contribute to housing needs, for those in Fordingbridge, Augustus Park and the land on the Whitsbury Road are relied upon for housing delivery whereas in Ringwood, strategic developments on Snails Lane, Nouale Land and Moortown Lane are expected to deliver in excess 1,100 houses to

the town along with much needed affordable housing, where the planning policy requires up to 50% of the new homes for this purpose.

However, the issue is that NFDC, as an example, will need to increase its housing delivery by over 100% in order to meet the government's ambition. The time delays for the planning journey now leave a gaping door of a failing "5 year land supply" which will now introduce a "tilted balance" argument allowing sites that can support new housing to progress faster via the appeal route.

Trying to simplify a complex process is hard but if you have land that can support development, we'd be happy to review this and offer our opinion. Please contact Jason on 07798 621585



PROPERTY

BRIGHTWATER

SALES | LETTINGS | BUY-TO-LETS



Ringwood £550,000

Extended detached Bungalow located in Ringwood. Three Bedrooms | Open Plan Kitchen Diner | Separate Living Room | Rear Garden | Driveway Parking | Cul-De-Sac Position | Excellent Transport Links | Close to Local Schools and Amenities.



Ringwood £395,000

Semi-Detached House located in Ringwood. Three Bedrooms | Open Plan Living | Intergrated Appliances | Conservatory | Separate WC and Utility Room | Rear Garden with Patio and Lawn | Driveway Parking | Close to Local Amenities and Schools.



Ringwood £299,950

Semi-Detached House located in the heart of Ringwood Town Centre | Two Bedrooms | Open Plan Living | Modern Decoration | Enclosed Courtyard Garden | Off Road Parking for One Car | Excellent Transport Links | Ideal First Time Buy or Investment.



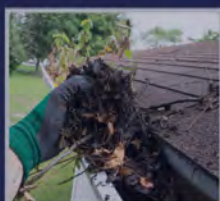
St Ives OIE £1,000,000



Exceptional detached Chalet Bungalow located in St Ives. Five Bedrooms | Three Bathrooms | Open Plan Kitchen Diner Family Room | Main Bedroom with En-Suite and Walk in Wardrobe | Large Rear Garden with Separate Annex | Plot Approaching 0.4 Acre | Driveway Parking for Multiple Vehicles | Offered with No Onward Chain | Close to Transport Links and Market Town.

Why Curb Appeal Matters When Selling Your Property.

BRIGHTWATER



1. First Impressions Count
2. Sets the Tone for the Property
3. Increase Buyer Interest
4. Enhances Perceived Value
5. Boosts Online Appeal
6. Increases Competition Amongst Buyers

Visit our website
www.brightwaterproperties.co.uk to read more of our blog!

BRIGHTWATER

2 High Street
 Ringwood
 Hampshire
 BH24 1AF

01425 478 719

brightwaterproperties.co.uk

SCAN HERE to see more property details





Founder
Isaac White

Est 1935

✉ info@whiteandsons-driveways.co.uk

📍 66 Wayside Road,
St Leonards
BH24 2SJ

🌐 www.whiteandsons-driveways.co.uk

- Tarmac Driveways
- Patios
- Paving
- Drainage
- Soakaways
- Walls

White & Sons

ASPHALT & TARMACADAM SPECIALISTS



01202 877481
07713 12 11 87